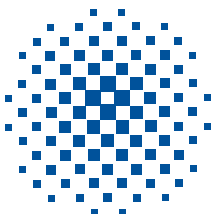
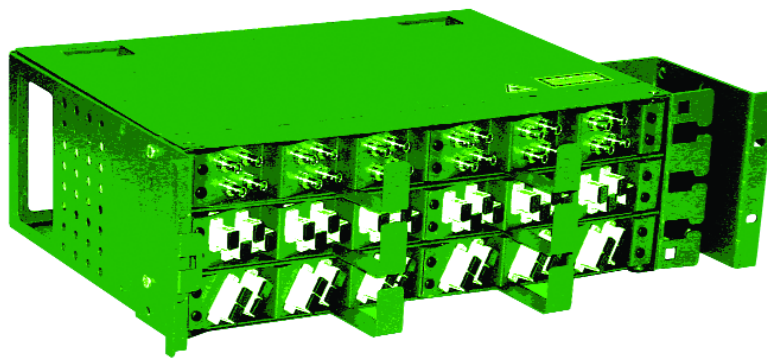
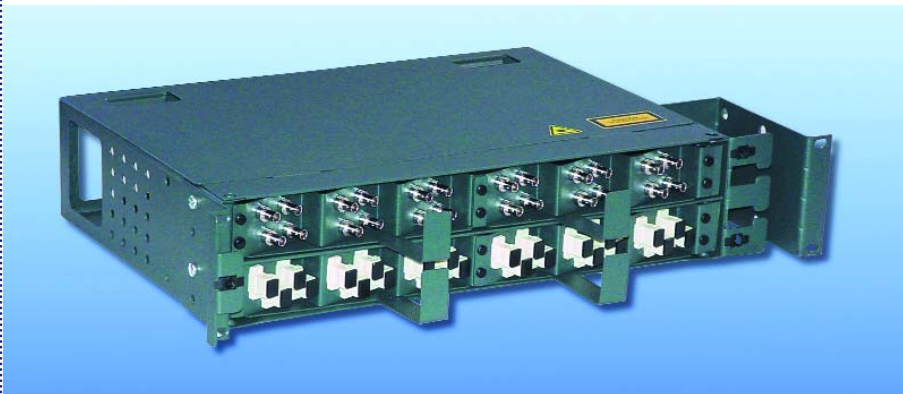
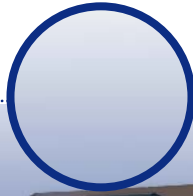
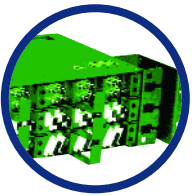


KRONE HIGHLIGHT[®]

24, 48 and 72 Port Patch Panels



KRONE[®]



KRONE HIGHLIGHT® 24, 48 and 72 Port Patch Panels

KRONE HIGHLIGHT high density Patch Panels are suitable for installation in 19" rack systems in both premises networks (KRONE PremisNET solutions) and carrier networks (KRONE AccessNET solutions).

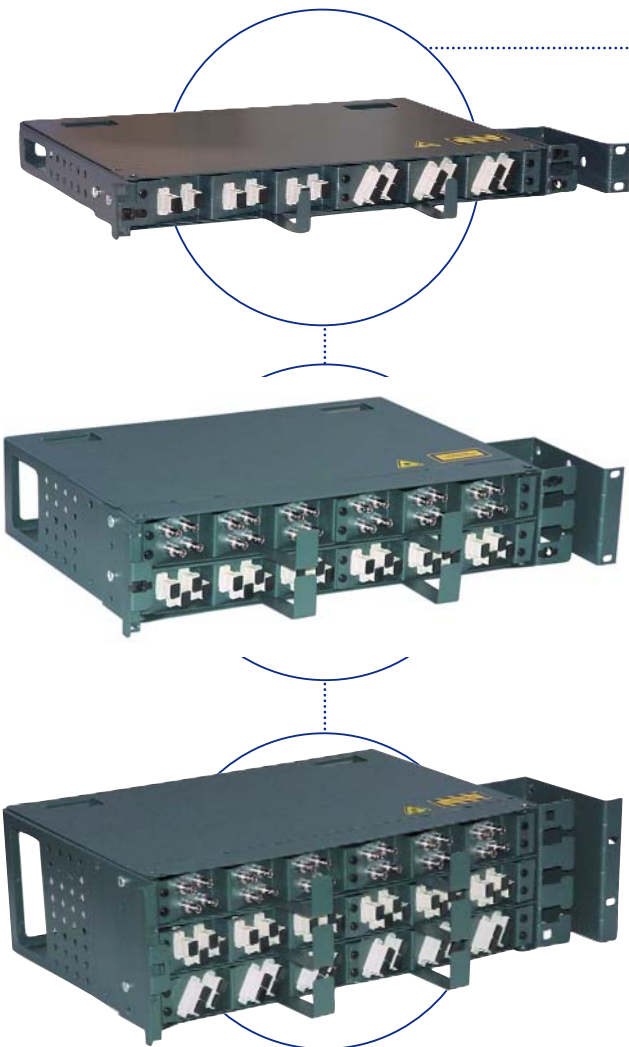
- The Patch Panels have been designed with many unique features and with an emphasis on density. The 24 port is one rack unit, 48 port two rack units and the 72 port three rack units in height. Designed for rear or side cable entry, the Patch Panels feature strain relief points for loose tube cable and cable tie points for tight buffered cable.

The hinged fibre tray may be configured for left or right hand opening and allows easy access to the fibre management system, couplings and splice cassette.

To protect the patch cords, the panel is equipped with a patch cord guide that can be positioned to the left or right.

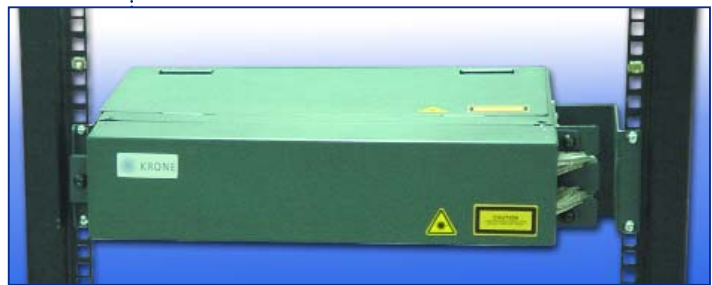
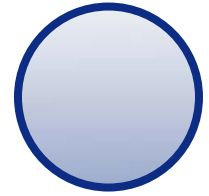
All KRONE HIGHLIGHT fibre products have been designed to meet the AS/ACIF S008 for Class II laser products.

For a total fibre patch panel solution KRONE's range of adaptor plates are available in SC Simplex, SC Duplex, ST, MTRJ, LC and RJ45 configurations.

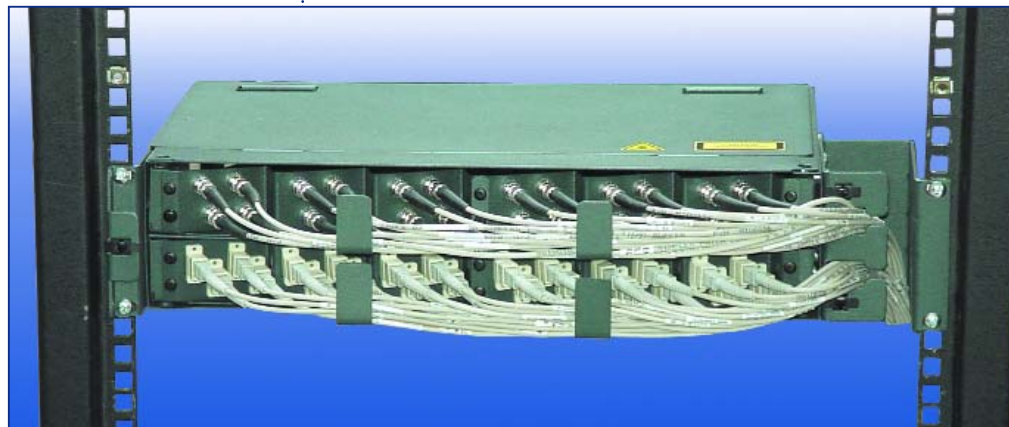


Features and Benefits:

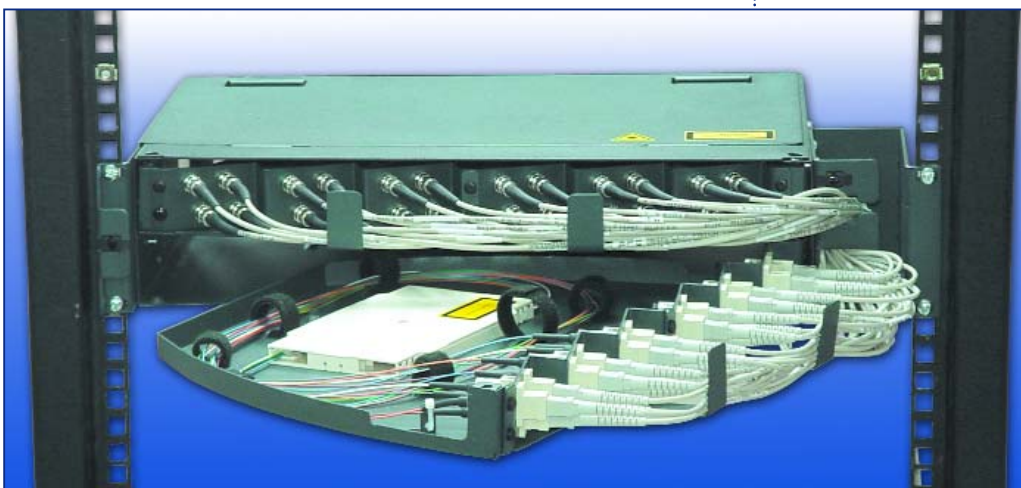
- 24 port is 1RU, 48 port is 2RU, 72 port is 3RU.
- LC or MTRJ couplers can be used to double the density.
- Designed for rear or side cable entry.
- Strain relief and cable tie points.
- Hinged fibre tray allows easy access for both installation and rework.
- Easily configured for right or left hand opening.
- Comes complete with patch cord guide.
- Supplied with Velcro ties for maintaining minimum bend radius.
- Removable lid.
- Standards compliant.



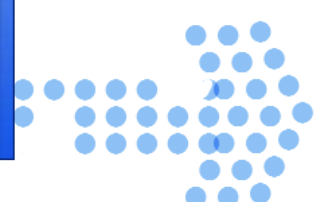
48 port Patch Panel installed in a 19" rack.



Cover removed for access to patchcords.



The hinged fibre tray allows access to fibre management, couplings and splice cassette.





KRONE HIGHLIGHT® 24, 48 and 72 Port Patch Panels

Technical specifications :

Designed for indoor and outdoor use in dry sealed enclosures.

Ambient use and storage temperature range: - 40° C + 60° C
 Maximum relative humidity: . . . <93% non-condensing
 Minimum bend radius:40mm

All sheet metal :Cold Rolled Mild Steel
 Swivel Bush & Hinge Pin :304 Stainless Steel

Colour :

Surface TreatmentAnotec Dark Grey

Ordering Information:

Hinged Tray 12/24 Port6877 1 002-02
 Fibre Patch Panel
 Hinged Tray 24/48 Port6877 1 002-00
 Fibre Patch Panel
 Hinged Tray 36/72 Port6877 1 002-01
 Fibre Patch Panel

HIGHLIGHT Adaptor Plates

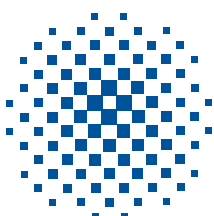
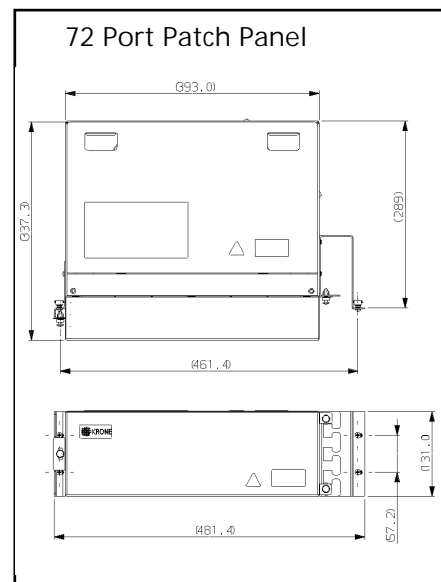
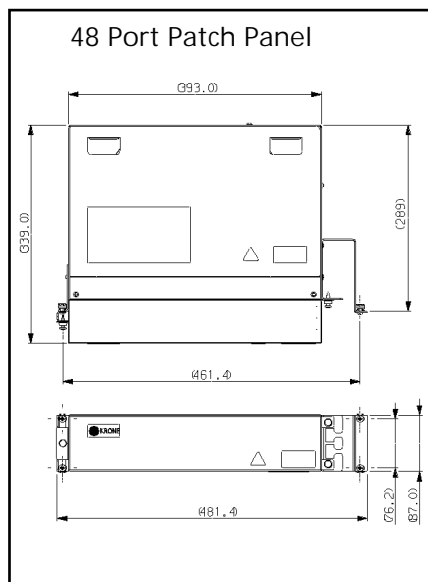
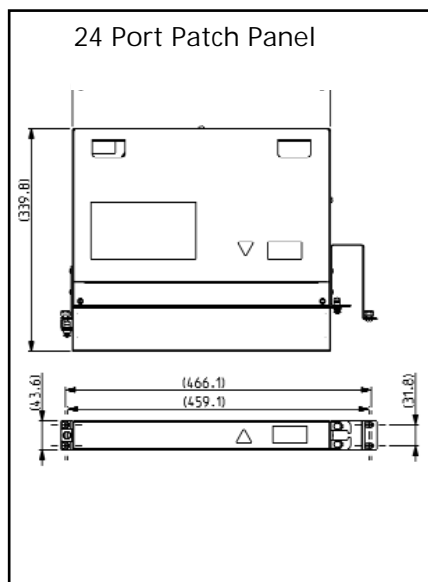
(without through adaptors)

12 Port SC6877 2 011-00
 12 Port ST6877 2 011-01
 12 Port SC Duplex6877 2 011-02
 24 Port SC6877 2 011-03
 24 Port ST6877 2 011-04
 24 Port SC Duplex6877 2 011-05
 6 Port HKI RJ456877 2 011-10
 Blank6877 2 011-11

HIGHLIGHT Adaptor Kits

(with through adaptors)

12 Port SC6877 2 010-00
 12 Port ST6877 2 010-01
 12 Port SC Duplex6877 2 010-02
 24 Port SC6877 2 010-03
 24 Port ST6877 2 010-04
 24 Port SC Duplex6877 2 010-05



KRONE®

For further information please contact:
 KRONE (Australia) Holdings Pty Limited
 PO Box 335, Wyong NSW 2259
 2 Hereford Street, Berkeley Vale NSW 2261
 Tel: 02 4389 5000
 Fax: 02 4388 4499
 Email: kronehlp@krone.com.au
 Web: www.krone.com.au
 5655 12/02

KRONE (N.Z.) Technique Limited
 PO Box 38-177
 Wellington Mail Centre
 Wellington, New Zealand
 Tel: 0800 657 663
 Fax: 0800 355 100
 Email: sales@krone.co.nz