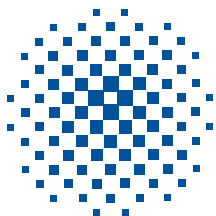
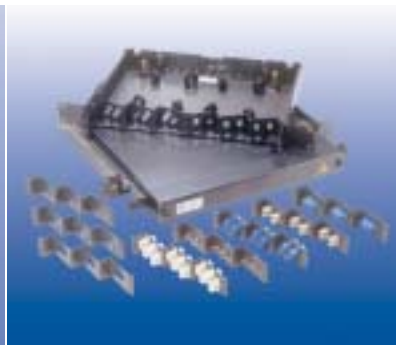
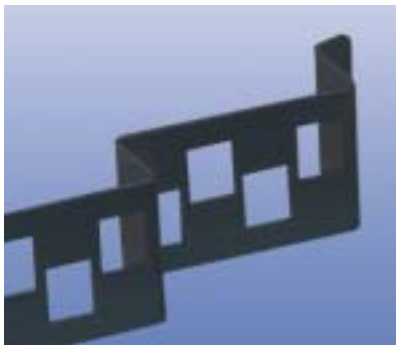


KRONE HIGHLIGHT™

12/24 Port Sliding Patch Panel



KRONE

KRONE HIGHLIGHT™

12/24 Port Sliding Patch Panel

Description

The sleek modern design of the new HIGHLIGHT fibre panels compliments the existing HIGHWAY range of patch panels and further enhances your cabling system or computer room. The superior, modular system is designed to meet Class II Laser Products as per Austel Technical Standard TS008-1996 to keep you light years ahead of your cabling needs.

Application

For the interconnection or cross connection between campus back bone cabling, building back bone cabling, or horizontal cabling systems.

The KRONE HIGHLIGHT patch panel can be equipped for either 12 port or 24 port in 1 rack unit depending on the type of adaptor plates or adaptor kits to be fitted.

Features and Benefits

- 12 or 24 port in 1 rack unit.
- Angled through adaptors for and human safety and improved patch cord and internal fibre management
- Internal tray extends past the face of the 19" rack via telescopic sliders for easy access to the internal fibre management system and through adaptors.
- Fully enclosed patch cord minder supplied for both human safety and mechanical protection for the connectors and patch cords
- Supplied complete with installation and cable management hardware.
- Strain relief posts removable for ease of installation.
- Velcro ties manage fibres and maintain minimum bending radii.
- Provision for maximum two stackable mini splice trays.

Part Numbers

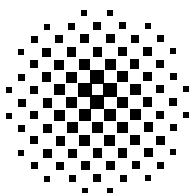
12/24 Port Sliding Patch Panel	6877 1 001-00
12/24 Port Fixed Patch Panel	6877 1 003-00
HIGHLIGHT Adaptor Plates (without through adaptors)	
12 Port SC.....	6877 2 011-00
12 Port ST	6877 2 011-01
12 Port SC Duplex.....	6877 2 011-02
24 Port SC.....	6877 2 011-03
24 Port ST	6877 2 011-04
24 Port SC Duplex	6877 2 011-05
6 Port HKI RJ45	6877 2 011-10

HIGHLIGHT Adaptor Kits (with through adaptors)

12 Port SC.....	6877 2 010-00
12 Port ST	6877 2 010-01
12 Port SC Duplex.....	6877 2 010-02
24 Port SC.....	6877 2 010-03
24 Port ST	6877 2 010-04
24 Port SC Duplex.....	6877 2 010-05

Dimensions

Depth	295mm
Height.....	44mm / 1 rack unit
Width	19" rack mountable / Internal Tray 375mm
Weight.....	6.44kg



KRONE®

For further information please contact:
KRONE (Australia) Holdings Pty Limited
PO Box 335, Wyong NSW 2259
2 Hereford Street, Berkeley Vale NSW 2261
Tel: 02 4388 4422
Fax: 02 4388 4499
Email: kronehp@krone.com.au
Web: www.krone.com.au
Job No. 5472 1/01

KRONE (N.Z.) Technique Limited
PO Box 38-177
Wellington Mail Centre
Wellington, New Zealand
Tel: 0800 657 663
Fax: 0800 355 100
Email: sales@krone.co.nz