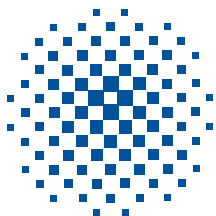
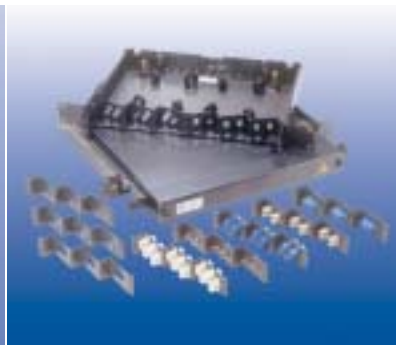
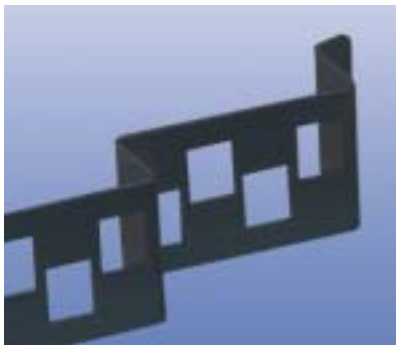


KRONE HIGHLIGHT™

12/24 Fixed Patch Panel



KRONE

KRONE HIGHLIGHT™

12/24 Fixed Patch Panel

Description

The sleek modern design of the new HIGHLIGHT fibre panels compliments the existing HIGHWAY range of patch panels and further enhance your cabling system or computer room. The superior modular system is designed to meet Class II Laser Products as per Austel Technical Standard TS008-1996 to keep you light years ahead of your cabling needs.

Application

For the interconnection or cross connection between campus back bone cabling, building back bone cabling, or horizontal cabling systems.

The KRONE HIGHLIGHT Patch Panel can be equipped for 12 port or 24 port in 1 rack unit depending on the type of Adaptor Plates or Adaptor Kits to be fitted.

Features and Benefits

- 12 or 24 port in 1 rack unit.
- Angled through adaptors for both human safety improved patch cord and internal fibre management
- Fully enclosed patch cord minder supplied for both human safety and mechanical protection for the connectors and patch cords
- Supplied complete with installation and cable management hardware
- Strain relief posts removable for ease of installation
- Velcro ties manage fibres and maintain minimum bending radii
- Provision for maximum two stackable mini splice trays.

Part Numbers

12/24 Port Fixed Patch Panel6877 1 003-00
12/24 Port Sliding Patch Panel.....6877 1 001-00

HIGHLIGHT Adaptor Plates (without through adaptors)

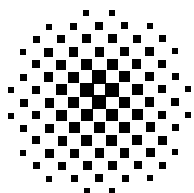
12 Port SC.....6877 2 011-00
12 Port ST6877 2 011-01
12 Port SC Duplex.....6877 2 011-02
24 Port SC.....6877 2 011-03
24 Port ST6877 2 011-04
24 Port SC Duplex6877 2 011-05
6 Port HKI RJ456877 2 011-10

HIGHLIGHT Adaptor Kits (with though adaptors)

12 Port SC.....6877 2 010-00
12 Port ST6877 2 010-01
12 Port SC Duplex.....6877 2 010-02
24 Port SC.....6877 2 010-03
24 Port ST6877 2 010-04
24 Port SC Duplex.....6877 2 010-05

Dimensions

Depth278mm
Height.....44mm / 1 rack unit
Width19" rack mountable / Internal Tray 375mm
Weight.....4.28kg



KRONE®

For further information please contact:
KRONE (Australia) Holdings Pty Limited
PO Box 335, Wyong NSW 2259
2 Hereford Street, Berkeley Vale NSW 2261
Tel: 02 4388 4422
Fax: 02 4388 4499
Email: kronehp@krone.com.au
Web: www.krone.com.au
Job No. 5473 1/01

KRONE (N.Z.) Technique Limited
PO Box 38-177
Wellington Mail Centre
Wellington, New Zealand
Tel: 0800 657 663
Fax: 0800 355 100
Email: sales@krone.co.nz