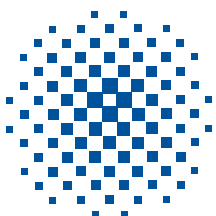
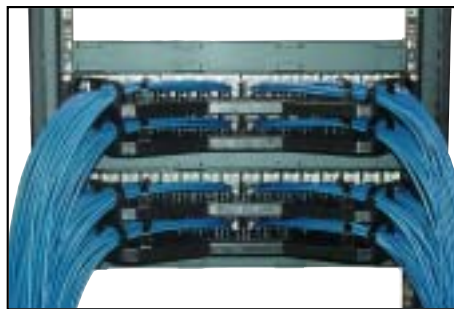


MASTERMINDER

The cable management choice of
Master cabling

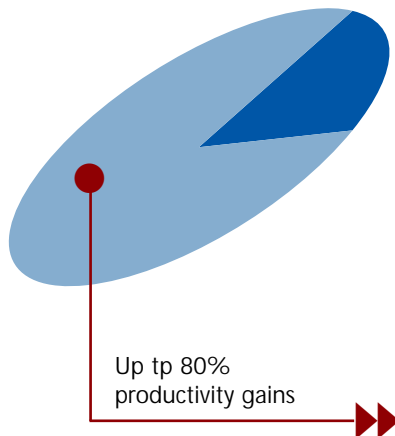


KRONE®

Customer expectation for higher and higher network performance has lead to increased demand for Cat5e and Cat6 compliant cabling solutions. This shift towards higher performance structured cabling systems means that now more than ever installers must put a high priority on the need for correct cabling practices and for maintaining the proper bending radii of cables within the system.

The unique design of the new MASTERMINDER cable management system from KRONE assists installers and ensures correct cabling practices are achieved and maintained throughout the life of the installation.

The KRONE MASTERMINDER, developed using state-of-the-art injection moulding technology, boasts lock-in guides that eliminate the need for Velcro or cable ties that can easily be over tightened, as well as upright posts to ensure that the correct bending radius of the cable is maintained at all times. This design ensures network performance is not compromised and it also saves installers considerable cable management looming time.



Features & Benefits

Faster installation:

The MASTERMINDER allows installers optimum results with minimum effort. Its unique design reduces cable management looming time by up to 80 percent!

Ensures optimum network performance:

The upright posts help maintain the correct bending radii of the cables ensuring that system performance is not compromised. Lock in guides replace the need for cable ties eliminating the chance of an over tightened tie reducing network throughput.

Supreme Cable Management:

Its height does not exceed 1RU, which allows for multiple MASTERMINDERS to be used, providing a much neater cabling system. The job will have a professional finish, first time, every time.

Savings on material costs:

The one piece injection moulded, plastic MASTERMINDER does not require the use of cable or Velcro ties, thereby reducing the overall material cost of an installation.

High Density design:

The MASTERMINDER is ideal for high density 32 port applications accommodating up to 32 C6T UTP cables. (This product is not recommended for STP applications.)

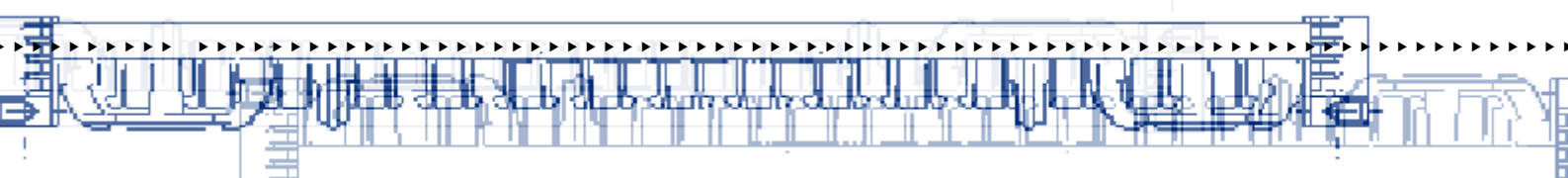
Versatile design:

The MASTERMINDER will suit KRONE as well as most other commercially available brands of RJ45 Patch Panels as it mounts directly onto the 19" rack. This product will allow for most methods of installation practice.

Environmentally Friendly:

The latest technology used to mould the MASTERMINDER ensures no waste material.

(KRONE (Australia) Holdings has a Certified Environment Management System to AS/NZS ISO 14001:1996.)





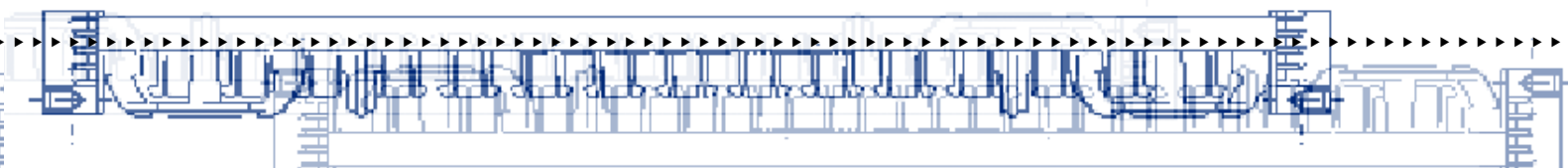
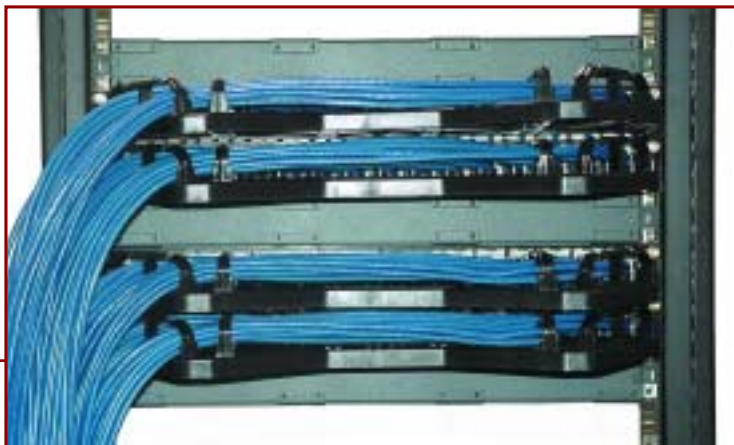
Step 1: Secure the MASTERMINDER with the provided fasteners.



Step 2: Fit the terminated cables into the lock in guides.



Installation examples showing cables off to either side or, as shown below, all to one side.





DESCRIPTION & APPLICATION:

Moulded plastic rear mounted cable minder. Screwed directly on to standard 19" racks to suit KRONE HK and PMK and most market brands. Maximum capacity for 32 port C6T cable management, incorporates minimum bend radius cable guides and eliminates cable ties.

DIMENSIONS:

206 mm X 44 mm X 486 mm

COLOUR:

Black

OPERATING CONDITIONS & MECHANICAL DATA:

Designed for indoor, outdoor use in dry enclosures.

Ambient use and storage temperate range:

-40 C +60 C

Maximum relative humidity:

<93% non-condensing

Maximum cable load: 5 kg.

ELECTRICAL & MATERIAL DATA:

Means to maintain minimum bend radius of cable to AS/NZS 3080.2000.

MASTERMINDER:

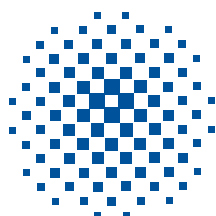
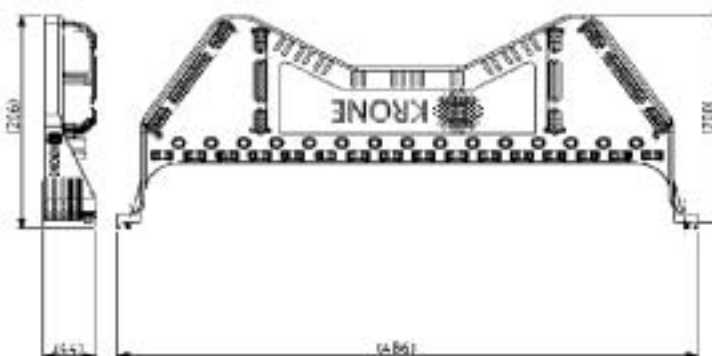
ABS/Polycarbonate Alloy.

MASTERMINDER Flammability:

UL 94 V0

The MASTERMINDER is available on its own or with any of the existing KRONE patch panel range. The part numbers are as follows:

Part Number	Description
6450 1 090-00	MASTERMINDER Patch Panel Rear Cable Manager
6450 1 090-16	Keystone 16 Port unloaded Patch Panel with MASTERMINDER
6450 1 090-24	Keystone 24 Port unloaded Patch Panel with MASTERMINDER
6450 1 090-32	Keystone 32 Port unloaded Patch Panel with MASTERMINDER
6450 1 091-16	Keystone 16 Port C5ET Patch Panel with MASTERMINDER
6450 1 091-24	Keystone 24 Port C5ET Patch Panel with MASTERMINDER
6450 1 091-32	Keystone 32 Port C5ET Patch Panel with MASTERMINDER
6450 1 092-16	Keystone 16 Port C6T Patch Panel with MASTERMINDER
6450 1 092-24	Keystone 24 Port C6T Patch Panel with MASTERMINDER
6450 1 092-32	Keystone 32 Port C6T Patch Panel with MASTERMINDER
6450 1 093-16	HIGHWAY PMK 16 Port C5E Patch Panel with MASTERMINDER
6450 1 093-24	HIGHWAY PMK 24 Port C5E Patch Panel with MASTERMINDER
6450 1 093-32	HIGHWAY PMK 32 Port C5E Patch Panel with MASTERMINDER



KRONE

5528 07/01

For further information please contact:
 KRONE (Australia) Holdings Pty Limited
 PO Box 335, Wyong NSW 2259
 2 Hereford Street, Berkeley Vale NSW 2261
 Tel: 02 4388 4422
 Fax: 02 4388 4499
 Email: kronehp@krone.com.au
 Web: www.krone.com.au

KRONE (N.Z.) Technique Limited
 PO Box 38-177
 Wellington Mail Centre
 Wellington, New Zealand
 Tel: 0800 657 663
 Fax: 0800 355 100
 Email: sales@krone.co.nz