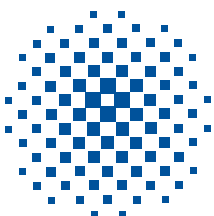
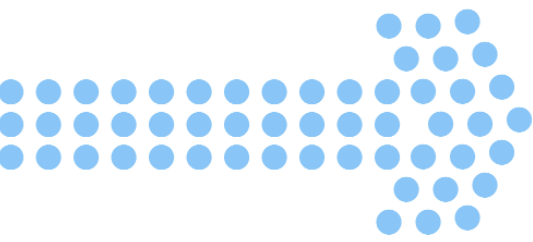


HIGHLIGHT® CSM and GP Indoor Fibre Cable

See Network Performance
in a New Light



KRONE®



KRONE Australia is pleased to introduce HIGHLIGHT® CSM and HIGHLIGHT GP .

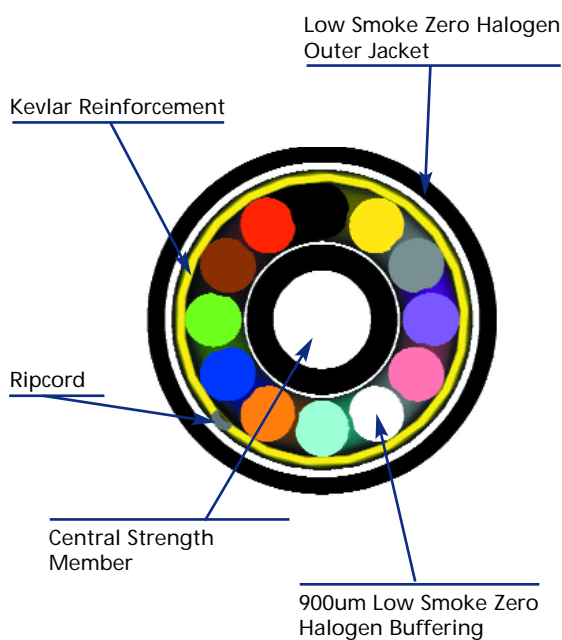
The new HIGHLIGHT CSM and HIGHLIGHT GP range of fibre cables will enhance every network configuration.

The KRONE HIGHLIGHT CSM (Central Strength Member) range of cable has outstanding performance characteristics even when installed in the most physically demanding environments.

When KRONE HIGHLIGHT CSM cable is installed in your network you can rest assured the system will consistently deliver maximum data throughput.

The KRONE HIGHLIGHT GP (General Purpose) range of cable is designed for use in all Network Backbones and Fibre-To-The-Desk applications. The GP range of cable offers an economic solution for general purpose indoor applications.

KRONE HIGHLIGHT CSM & HIGHLIGHT GP fibre cable are designed for use in all KRONE *GLOBAL LEADER & ENTERPRISE* solutions.



Cross-Section of CSM Cable

See Network Performance in a New Light



HIGHLIGHT® CSM

HIGHLIGHT CSM is a robust cabling solution for use in the most demanding network environments.

Fibres are stranded around the central strength member, providing superior geometric conformity and eliminating stress in the fibre cores. The result is:

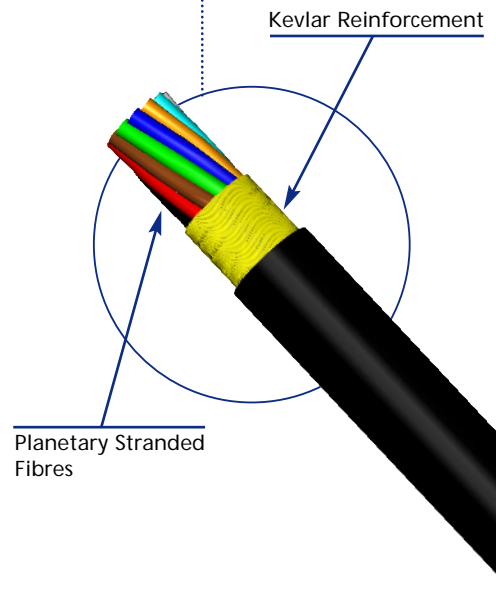
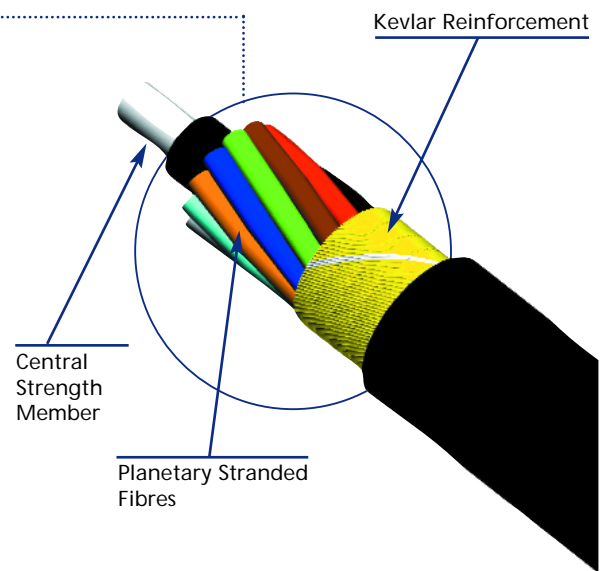
- Greater lateral support and integrity during and after installation
- CSM cable can endure installation forces up to 1800 newtons
- Each fibre element maintains an equal bend radius, reducing fibre losses
- Greater temperature stability, reducing fibre losses in the cable
- HIGHLIGHT CSM features a rip cord for ease of jacket removal, Flame retardant construction, easy one-pass stripping of the fibres and 100% Kevlar reinforcement.

HIGHLIGHT® GP

HIGHLIGHT GP is a cost-effective general purpose cabling solution suitable for use in all typical indoor applications.

- HIGHLIGHT GP features Flame retardant construction, easy one-pass stripping of the fibres and 100% Kevlar reinforcement
- Planetary stranded fibres provide greater temperature stability

Also available — A comprehensive range of outdoor loose tube cable and fibre cross-connect hardware.



Mechanical & Environmental Characteristics

	GP 4-12 Fibres	CSM 4-12 Fibres	CSM 18-24 Fibres
Crush Resistance (EIA-FOTP-41A):	500 N/cm	1500 N/cm	1500 N/cm
Impact Resistance (EIA-FOTP-25A):	19.6N/CM - 3 cycles	5.88N/CM - 20 cycles	5.88N/CM - 20 cycles
Flexing (EIA-FOTP-104A):	1000 cycles	1000 cycles	1000 cycles
Maximum Pulling Load (EIA-FOTP-33A):	560 Newtons	1000 Newtons	1800 Newtons
Maximum Safe Operating Load:	500 Newtons	600 Newtons	1000 Newtons
Minimum Bend Radius:			
At Max. Load:	20 x cable O.D.	20 x cable O.D.	20 x cable O.D.
Unloaded:	10 x cable O.D.	10 x cable O.D.	10 x cable O.D.
Operating Temperature:	-20° to + 70° C	-40° to + 70°C	-40° to + 70°C
Storage Temperature (non-flexing):	-20° to + 70° C	-40° to + 70°C	-40° to + 70°C
Installation Temperature:	0° to + 70° C	0° to + 70°C	0° to + 70°C

Optical Specifications

Fibre Type	Max. Attenuation (dB/km)	Typical Attenuation dB/km	Guaranteed Minimum Bandwidth	Core Diameter (Microns)	Clad Diameter (Microns)	Numerical Aperture
50/125 Multimode	2.9/1.0▲	2.6/0.6▲	550/600▲	50 ± 3	125 ± 2	0.200 ± 0.015
62.5/125 Gigabit Multimode	2.8/0.6▲	2.7/0.75▲	200/600▲	62.5 ± 2.5	125 ± 2	0.275 ± 0.015
Single-mode	0.35/0.22■	0.05/0.05■	Mode Field Diameter	9.2 ± 0.5	125 ± 1.0	0.13
				@ 1310nm		

- ▲ Attenuation and Bandwidth values for Multimode: 850nm/1300nm
- Attenuation and Bandwidth values for Single-mode: 1310nm/1550nm

GP Cable and Jacket Specifications and Ordering Information

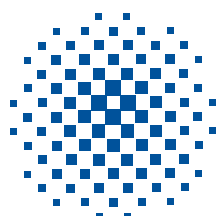
Part Number	Cable Type	No. of Fibres	Cable Diameter (mm)	Cable Weight (Nom. kg/km)	Jacket Type
6462 4 482-04	Distribution	4	4.3	20	Low Smoke Zero Halogen
6462 4 482-06	Distribution	6	5.2	29	Low Smoke Zero Halogen
6462 4 482-08	Distribution	8	5.5	33	Low Smoke Zero Halogen
6462 4 482-12	Distribution	12	6.1	39	Low Smoke Zero Halogen

CSM Cable and Jacket Specifications and Ordering Information

Part Number	Cable Type	No. of Fibres	Cable Diameter (mm)	Cable Weight (Nom. kg/km)	Jacket Type
6462 4 4XX-04	Distribution	4	6.0	41	Low Smoke Zero Halogen
6462 4 4XX-06	Distribution	6	6.1	41	Low Smoke Zero Halogen
6462 4 4XX-08	Distribution	8	7.1	57	Low Smoke Zero Halogen
6462 4 4XX-12	Distribution	12	8.3	77	Low Smoke Zero Halogen
6462 4 4XX-24	Distribution	24	9.4	78	Low Smoke Zero Halogen

XX = 33 62.5/125, XX = 45 9.125, XX = 69 50/125

* Contact us for availability of OM3 products.



KRONE®

For further information please contact:
 KRONE (Australia) Holdings Pty Limited
 PO Box 335, Wyong NSW 2259
 2 Hereford Street, Berkeley Vale NSW 2261
 Tel: 02 4389 5000
 Fax: 02 4388 4499
 Email: kronehlp@krone.com.au
 Web: www.krone.com.au
 6078 04/03

KRONE (N.Z.) Technique Limited
 PO Box 38-177
 Wellington Mail Centre
 Wellington, New Zealand
 Tel: 0800 657 663
 Fax: 0800 355 100
 Email: sales@krone.co.nz