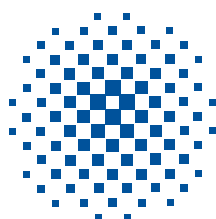
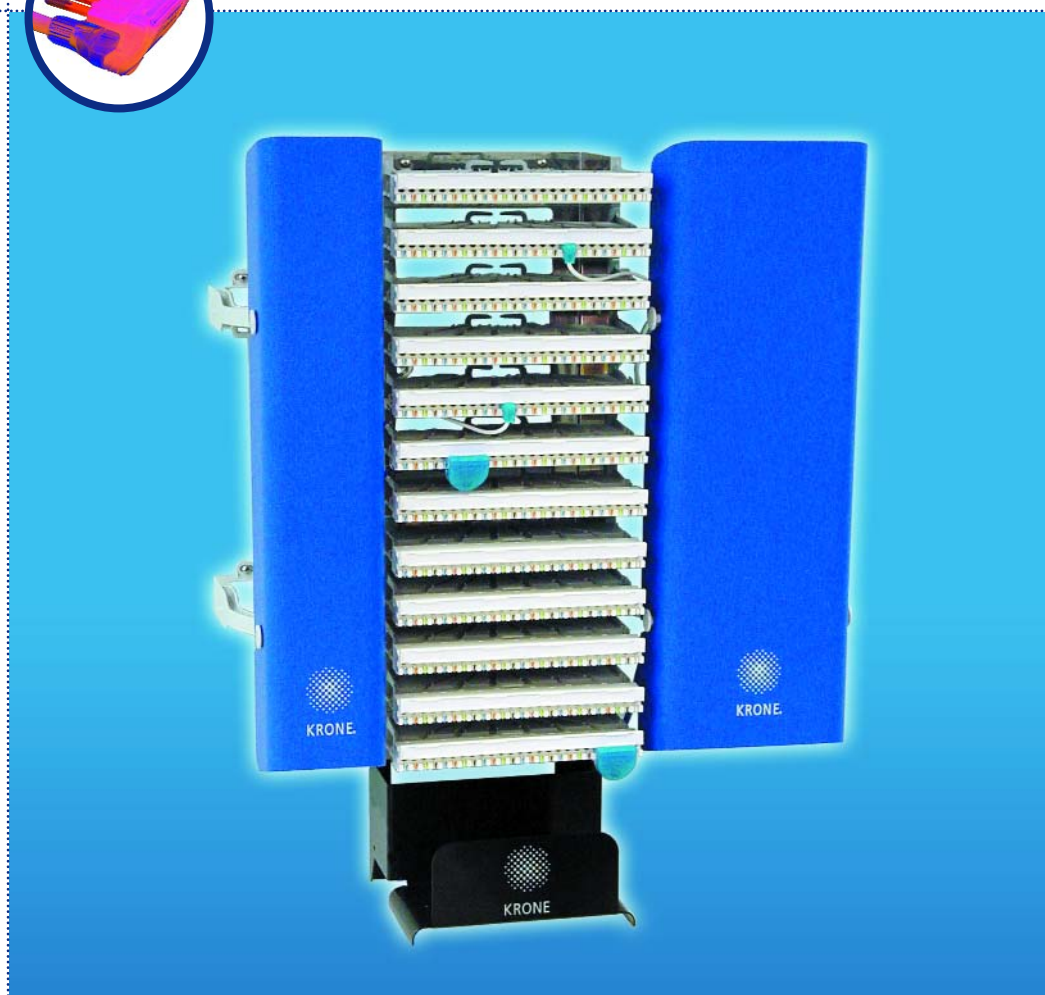
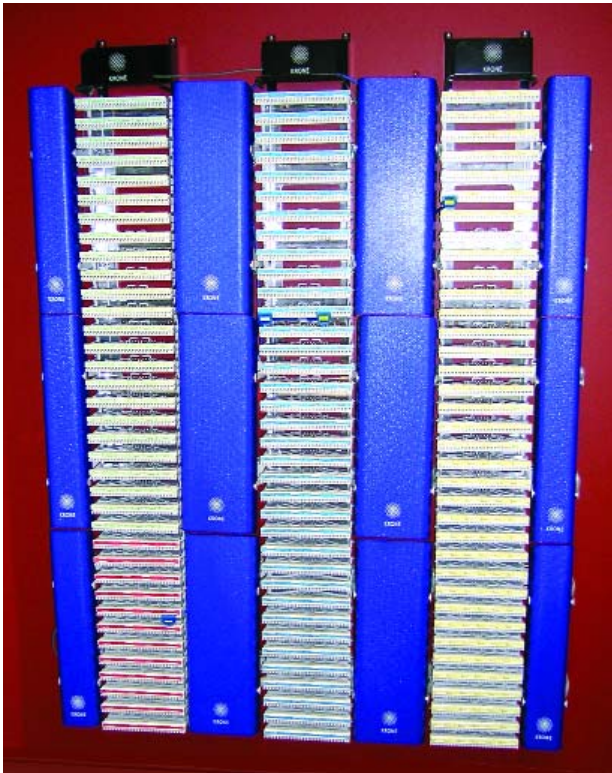


HIGHBAND® 25

Using TrueNet™ Technology



KRONE®



Typical HIGHBAND 25 Patch by Exception solution. Three 900 pair verticals including cable management.

* *GLOBAL LEADER* is a comprehensive Category 6 communications solution, for leading corporations and businesses, wanting the most advanced network performance.

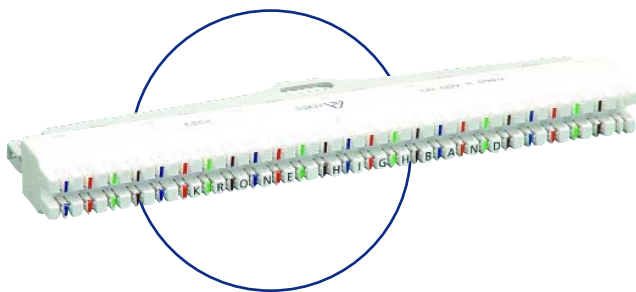
An integral part of KRONE's PremisNET® *GLOBAL LEADER** solution, the HIGHBAND® 25 cross-connect solution exceeds all Category 6 standards for performance and reliability.

HIGHBAND 25 provides the platform needed for the most advanced networks.

The HIGHBAND 25 module is the only 25 pair Category 6 module in the world that offers a disconnect feature. The HIGHBAND 25 range, utilising TrueNet™ technology, allows for maximum network throughput beyond one Gigabit.

The HIGHBAND 25 module features KRONE's LSA-PLUS® contact principle - the world's most reliable IDC connection technology. Only KRONE products employ LSA-PLUS technology. The frequent moves, adds and changes that occur in today's cabling systems can quickly degrade the quality of wire termination. KRONE products maintain superior connectivity during hundreds of re-terminations and deliver the best electrical performance in the industry.

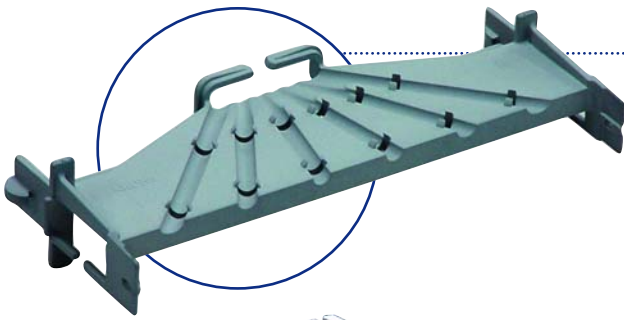
KRONE's HIGHBAND 25 solution delivers the performance needed.



● HIGHBAND® 25 MODULE

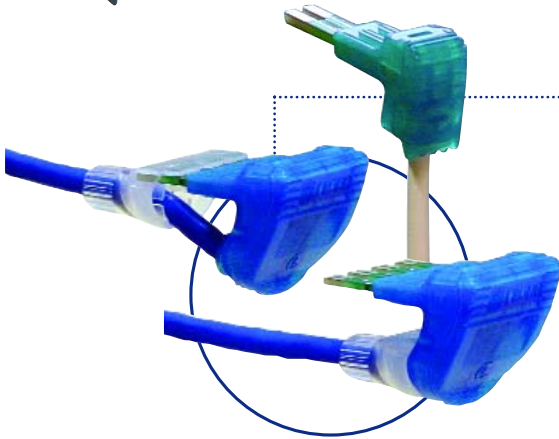
Colour coded for ease of termination, the HIGHBAND 25 module allows termination of six, four pair (Category 6) cables. The HIGHBAND 25 module has disconnect contacts, providing for ease of administration and Patch-By-Exception (PBE). Invented by KRONE, PBE remains the highest performing, most cost effective solution on the market today.





● REAR CABLE MANAGER

The rear cable manager provides cable management for incoming cables and makes installation easier. The incoming cables are simply routed through the slots provided and held in place by built-in clips. The slots direct the cable to the point of termination and hold the cable whilst each pair of wires is terminated, eliminating the need for velcro ties.

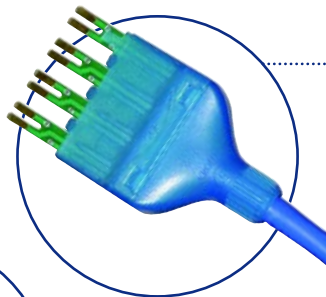


● REAR FACING PATCH CORDS

The fully compliant Category 6 cords are available in both four pair and four pair to RJ45 configurations. An innovative anti-snag boot assists with the removal of the patch cords.

A one pair patch cord is available to patch voice applications or to do single pair testing.

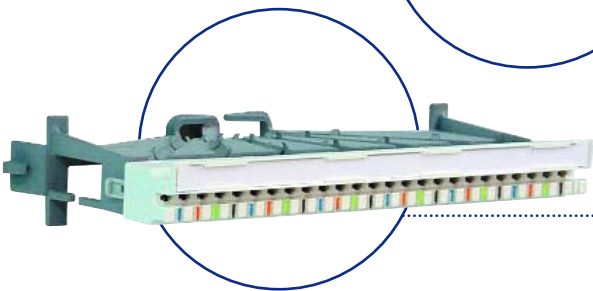
Available in a variety of colours.



● FRONT FACING PATCH CORD

The front facing patch cord is ideally suited to high-density 19" rack mount applications or for use as test cords.

The new HIGHBAND 25 front facing patch cords are available in 4 pair to 4 pair and 4 pair to RJ45 configurations.



● LABELLING

The HIGHBAND 25 label holder clips into position in 3 locations, providing a secure fit and allows patching and jumpering whilst it is fitted.



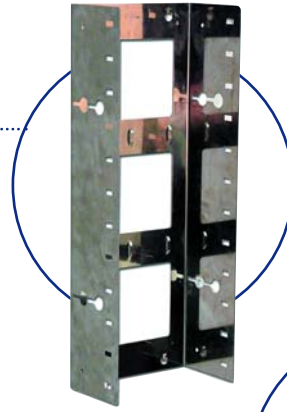
● VERTICAL CABLE MANAGEMENT

Vertical cable managers, available as single or dual rings, provide a neat and professional appearance.



MOUNTING FRAME ●

The 300 pair mounting frame is made from high-grade stainless steel, providing strength and superior corrosion resistance. Extra depth has been provided to allow for strict Category 6 bend radius requirements and velcro tie points have been added to ensure tidy installation practices and ease of cable routing.



CONSOLIDATION POINT ●

The consolidation point has a robust stainless steel frame, which accommodates 4 HIGHBAND 25 modules that exceed Category 6 performance. A formed plastic cover is provided to protect the modules and provide a neat clean finish.



RACK MOUNT FRAMES ●

The 19" recessed frames are available in 100pr (2RU), 200pr (3RU) and 300pr (4RU) all consisting of a 19" frame and HIGHBAND 25 colour coded modules.



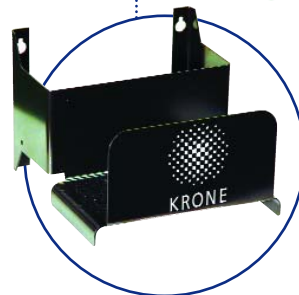
COVERS ●

Moulded plastic covers, available to suit single or dual vertical cable managers, provide a neat, clean finish to the HIGHBAND® 25 system.



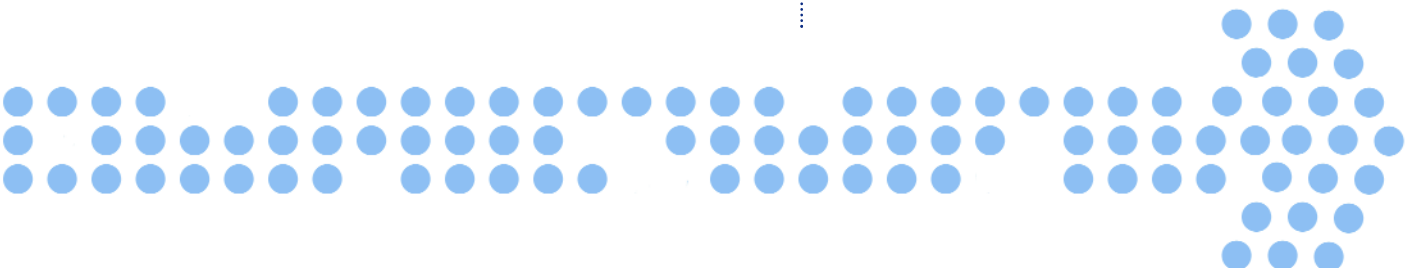
CABLE TROUGH ●

Cable troughs mounted on the top and bottom of each frame ensure superior patch cord management and correct bend radius between frames, and assist with the overall appearance of the frame.

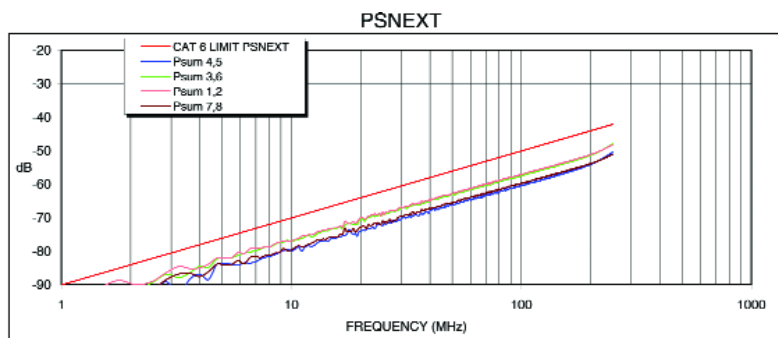


For ease of installation, performance and organised cable management - nothing compares to HIGHBAND 25.

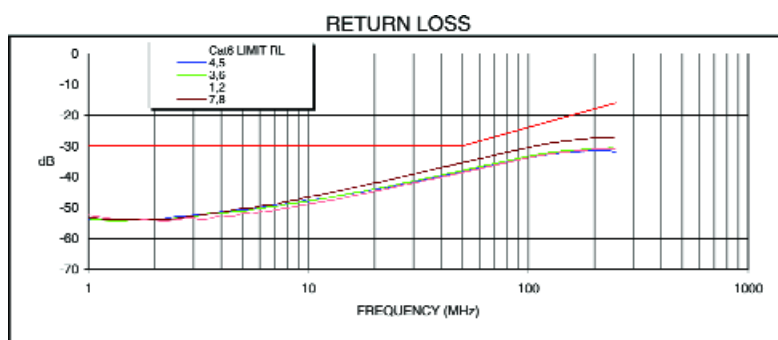
HIGHBAND 25 products are also available for BROADBAND (Category 5) and 19" applications, and can be tailored to meet your network needs. Contact us now to find out how HIGHBAND can enhance your network performance.



ELECTRICAL PERFORMANCE



Typical Powersum NEXT (PSNEXT) HB25 Module component compliance.



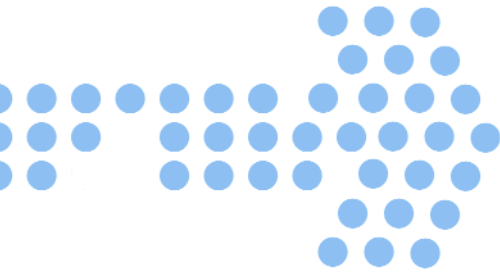
Typical Return Loss (RL) HB25 Module component compliance.

TECHNICAL SPECIFICATIONS

Environment for use:	indoors, in dry closed rooms
Operating temperature range:	-40°C to +80°C
Maximum relative humidity:	≤93% non-condensing
Transmission performance and reliability	exceeds ISO/IEC 11801 Class E AS/NZS 3080:2002 Class E TIA/EIA 568-B.2-1 Cat 6
Number of patching cycles:	>750
Number of wire re-terminations:	>200
Wire diameter range for solid and stranded copper conductors:	0.40 –0.65mm (26-22 AWG)
Wire insulation diameter range (PE, PVC):	0.70 –1.40mm
Voltage rating:	≤150V AC
Insulation resistance:	5x10 ⁴ MΩ at 500V DC
Safety:	UL 1863
Flammability rating of plastic housing:	UL 94 V0

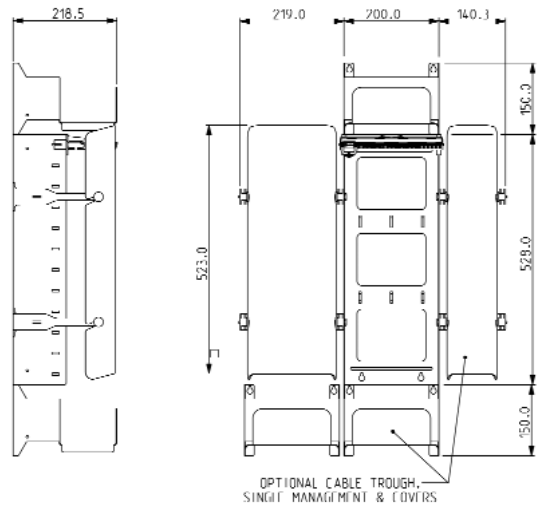
TYPICAL PERFORMANCE HB 25 MODULE COMPONENT COMPLIANCE

f (MHz)	Attn (dB)	NEXT (dB)	PSNEXT (dB)	RL (dB)	ELFEXT (dB)	PSSELFEXT (dB)	ACR (dB)	PSACR (dB)	DELAY (ns)	SKEW (ns)
1.00	0.028	94.4	92.0	52.5	99.0	96.4	94.4	92.0	0.46	0.15
4.00	0.017	86.5	83.6	50.5	91.8	90.7	86.5	83.6	0.29	0.12
10.00	0.014	79.3	76.5	45.6	89.0	85.4	79.3	76.5	0.43	0.19
16.00	0.013	74.9	72.1	42.7	84.2	81.9	74.9	72.1	0.42	0.13
20.00	0.017	72.8	69.8	41.1	81.6	77.7	72.8	69.8	0.31	0.11
31.25	0.018	69.0	66.3	37.9	77.9	74.5	69.0	66.3	0.42	0.22
62.50	0.028	63.6	60.6	32.8	74.3	70.8	63.6	60.6	0.34	0.14
100.00	0.049	59.6	56.6	29.4	69.7	66.4	59.5	56.6	0.46	0.17
125.00	0.071	57.9	54.9	28.0	67.7	64.4	57.8	54.9	0.37	0.09
155.52	0.046	56.1	53.1	27.0	65.4	62.0	56.0	53.1	0.37	0.11
175.00	0.012	54.9	52.0	26.6	64.0	60.2	54.9	52.0	0.47	0.33
200.00	0.033	53.7	50.6	26.2	62.0	58.5	53.7	50.6	0.37	0.13
250.00	0.017	50.5	47.3	26.1	58.4	55.1	50.5	47.3	0.55	0.30

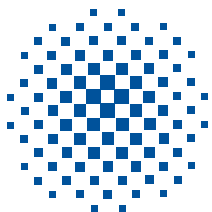


Ordering Information:

KRONE have made ordering the HIGHBAND 25 product range easy. You have the option of purchasing product in kit form or individually, as required.



HIGHBAND® 25 Range					
Description	Qty	Part No	Description	Qty	Part No
25pr Module Cat 6 including Cable Manager	12	6468 5 600-00	300Pr Kit		6450 1 101-00
25pr Module BROADBAND including Cable Manager	12	6468 5 300-00	Back Mount Frame 12 way	1	
300pr Back Mount Frame	1	6450 2 155-00	Label Holder	12	
Label Holders	12	6462 2 408-00	Module Disconnect Cat 6	12	
Cable Management Rings single	2	6450 2 156-01	BMF KIT 300 PAIR BROADBAND 25		6450 1 101-01
Cable Management Rings dual	2	6450 2 156-02	Back Mount Frame 12 way	1	
Cable Trough	1	6450 2 157-00	Label Holder	12	
Vertical Cover (half size)	1	6450 2 158-01	Module Disconnect Broadband	12	
Vertical Cover (full size)	1	6450 2 158-02	300Pr Cable Management Kit Dual		6450 1 103-00
4pr to RJ45 R/Facing patch cord 1.2m	1	6451 2 700-10	Cover dual	1	
4pr to RJ45 R/Facing patch cord 2.1m	1	6451 2 700-20	Cable Management Ring dual	2	
4pr to RJ45 R/Facing patch cord 3.0m	1	6451 2 700-30	300Pr Cable Management Kit Single		6450 1 103-01
4pr to RJ45 R/Facing patch cord 4.5m	1	6451 2 700-40	Cover Single	1	
4pr to 4pr R/Facing patch cord 1.2m	1	6451 2 701-10	Cable Management Ring Single	2	
4pr to 4pr R/Facing patch cord 2.1m	1	6451 2 701-20	900Pr Kit		6450 1 102-00
4pr to 4pr R/Facing patch cord 3.0m	1	6451 2 701-30	Back Mount Frame 12 Way	3	
4pr to 4pr R/Facing patch cord 4.5m	1	6451 2 701-40	Label Holder	36	
1pr to 1pr R/Facing patch cord 1.2m	1	6451 2 702-10	Module Disconnect Cat 6	36	
1pr to 1pr R/Facing patch cord 2.1m	1	6451 2 702-20	900Pr Cable Management Kit Dual		6450 1 104-00
1pr to 1pr R/Facing patch cord 3.0m	1	6451 2 702-30	Cover dual	3	
1pr to 1pr R/Facing patch cord 4.5m	1	6451 2 702-40	Cable Management Ring dual	6	
4PR- 4PR F/Facing patch cord 1.2M	1	6451 2 703-10	19" Rack Mount Frames		
4PR- 4PR F/Facing patch cord 2.1M	1	6451 2 703-20	100pr 19" Rack Mount Frame	1	6450 1 176-00
4PR- 4PR F/Facing patch cord 3.0M	1	6451 2 703-30	200pr 19" Rack Mount Frame	1	6450 1 177-00
4PR- 4PR F/Facing patch cord 4.5M	1	6451 2 703-40	300pr 19" Rack Mount Frame	1	6450 1 178-00
4PR- RJ45 F/Facing patch cord 1.2M	1	6451 2 704-10	Consolidation Point		
4PR- RJ45 F/Facing patch cord 2.1M	1	6451 2 704-20	HB25 100pr Consolidation Point	1	6450 1 105-01
4PR- RJ45 F/Facing patch cord 3.0M	1	6451 2 704-30			
4PR- RJ45 F/Facing patch cord 4.5M	1	6451 2 704-40			



KRONE®

For further information please contact:
 KRONE (Australia) Holdings Pty Limited
 PO Box 335, Wyong NSW 2259
 2 Hereford Street, Berkeley Vale NSW 2261
 Tel: 02 4389 5000
 Fax: 02 4388 4499
 Email: kronehlp@krone.com.au
 Web: www.krone.com.au
 Job No 6128 08/03

KRONE (N.Z.) Technique Limited
 PO Box 38-177
 Wellington Mail Centre
 Wellington, New Zealand
 Tel: 0800 657 663
 Fax: 0800 355 100
 Email: sales@krone.co.nz