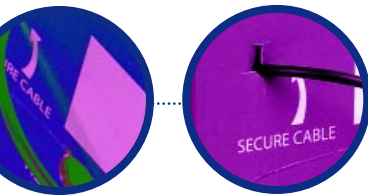


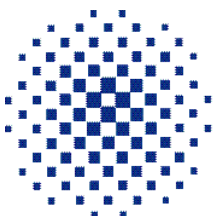
PremisNET[®] Fibre Cable

Fibre-in-a-Box[™]

Think Inside The Box!



- Ease of Handling
- Space Saving
- Cost Effective



KRONE[®]

PremisNET® Fibre Cable

Fibre-in-a-Box™ . . . Think Inside The Box!

Let KRONE light the way with this innovative new product designed to help streamline cable installation.

Fibre-in-a-Box is suitable for both contractors and distributors alike, and contains KRONE's HIGHLIGHT GP (General Purpose) cable, ideal for network backbones and fibre-to-the-desk applications:

- HIGHLIGHT GP features flame retardant construction, easy one-pass stripping of the fibres and 100% Kevlar reinforcement
- With planetary stranded fibres providing greater temperature stability

Easily transported between sites, Fibre-in-a-Box's compact packaging has been designed for maximum ease of use, featuring:

- Metre marking
- Easy glide reel system
- Generous cable exit point
- Reinforced carry point

All aimed at saving you time, space and money!

As with all KRONE PremisNET fibre solutions, the Fibre-in-a-Box cable product, exceeds local and international standards and is backed by our comprehensive warranty program.

Technical Specifications

GP

Crush Resistance (EIA-FOTP-41A):	500 N/cm
Impact Resistance (EIA-FOTP-25A)	19.6N/CM – 3 cycles
Flexing (EIA-FOTP-104A)	1000 cycles
Maximum Pulling Load (EIA-FOTP-33A):	560 Newtons
Maximum Safe Operating Load:	500 Newtons
Minimum Bend Radius:	
At Max Load:	20 x cable O. D.
Unloaded:	10 x cable O. D.
Operating Temperature:	-20°C to 70°C
Storage Temperature:	-20°C to 70°C
Installation Temperature:	0°C to 70°C

Fibre Characteristics

In compliance with ITU-T recommendations and ACA TS008

For maximum yield, the length of cable differs according to core count.

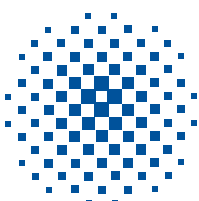
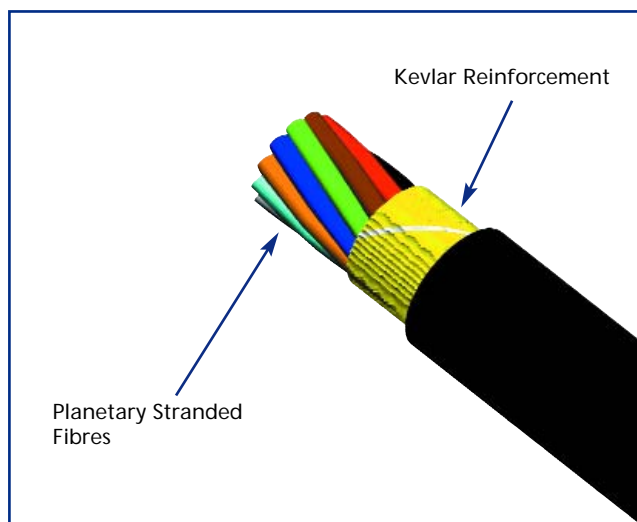
Packing

4 core	.500m
6 core	.500m
8 core	.400m
12 core	.320m

Part Numbers

(ordering information)

6462 5 482-04 4 core GP Fibre-in-a-Box
6462 5 482-06 6 core GP Fibre-in-a-Box
6462 5 482-08 8 core GP Fibre-in-a-Box
6462 5 482-12 12 core GP Fibre-in-a-Box



KRONE®

For further information please contact:
 KRONE (Australia) Holdings Pty Limited
 PO Box 335, Wyong NSW 2259
 2 Hereford Street, Berkeley Vale NSW 2261
 Tel: 02 4389 5000
 Fax: 02 4388 4499
 Email: kronehp@krone.com.au
 Web: www.krone.com.au
 Job No 6150

KRONE (N.Z.) Technique Limited
 PO Box 38-177
 Wellington Mail Centre
 Wellington, New Zealand
 Tel: 0800 657 663
 Fax: 0800 355 100
 Email: sales@krone.co.nz