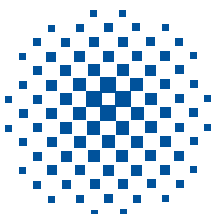
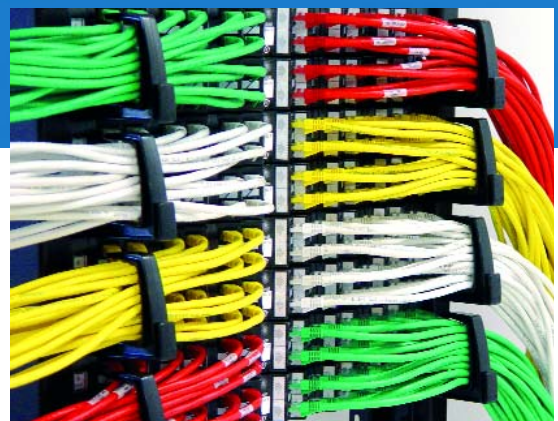
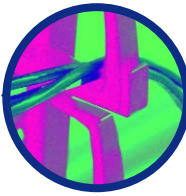
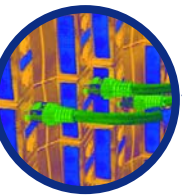


HIGHBAND[®] Category 6 Angled Patch Panels

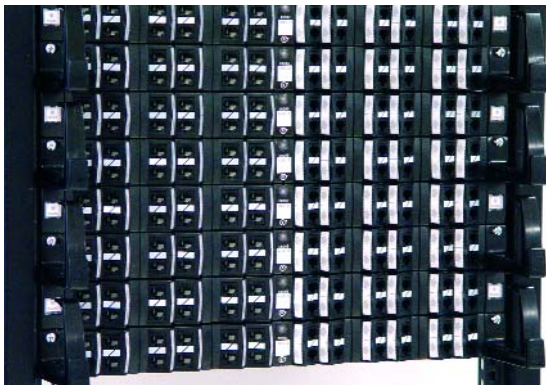
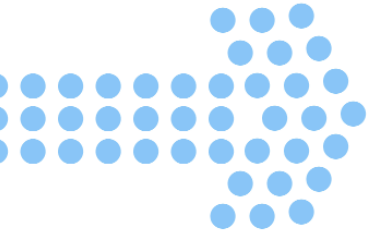
Using TrueNet[®] Technology



KRONE[®]



Registered
Partner



The KRONE HIGHBAND® Category 6 Angled Patch Panel is an innovative and integral part of KRONE's PremisNET® GLOBAL LEADER* solution.

The HIGHBAND family has introduced the world to high-speed structured cabling products that provide maximum data throughput for today and tomorrow's advanced networks.

● **SAVE TIME**

The angled panel is designed to improve the efficiency of 19" data cabinets. Patch cords are neatly directed to either side of the rack preventing the occurrence of tangled cords, which can become a network administrator's nightmare. Adds, moves and changes are made easy saving time and money.

● **SAVE SPACE**

With patch cords effectively directed to either side of the rack, horizontal cable managers become obsolete, creating space for additional panels and active equipment. Increased capacity saves valuable office space in building and floor distributor rooms. In fact, by using the new angled patch panel, you can fit twice as many panels in the one rack.

Twelve ports are angled to either side of the 24 port panel. Unlike other brands the HIGHBAND angled panel sits flush with other 19" rack equipment. Ideal for use with active equipment or existing panels, the angled panel can be easily retrofitted into most commercially available 19" cabinets.

● **UNRIVALLED PERFORMANCE**

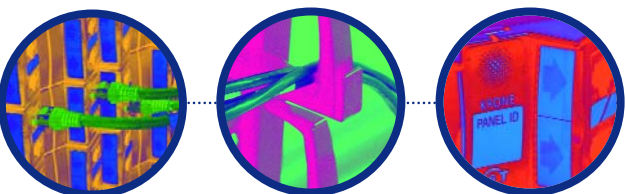
The angled ports are devised to maintain the specified Category 6 bend radius of the patch cords, preventing possible signal failure caused by over bent patch cords.

KRONE's Angled Patch Panel has been engineered to exceed international Category 6 cabling standards. Each port is guaranteed to provide optimum performance and are part of KRONE's TrueNet® solution, guaranteeing zero bit error¹ performance.



* GLOBAL LEADER is a comprehensive Category 6 communications solution, for leading corporations and businesses, wanting the most advanced network performance.

¹ Subject to terms and conditions of the TrueNet warranty.

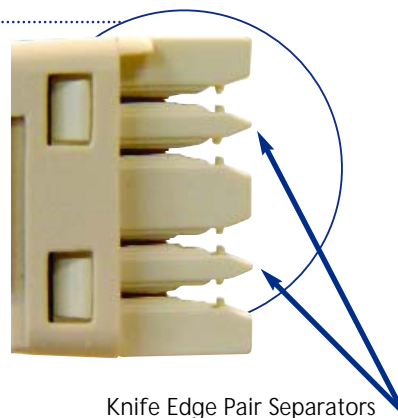


EASE OF INSTALLATION ●

The innovative knife-edge pair separator on KRONE's angled panel allows installers to leave cable pairs twisted at their original rate during installation. The knife-edge ensures each pair is secured into their respective positions without the need for untwisting. The clamping ribs then secure the wire in place before termination with the KRONE tool.

Maintaining the minimum amount of untwist right up to the point of termination ensures that the transmission performance is not compromised.

Not having to untwist each pair helps reduce the installation time and eliminates the need for an additional cable manager.



Knife Edge Pair Separators

ACCESSORIES

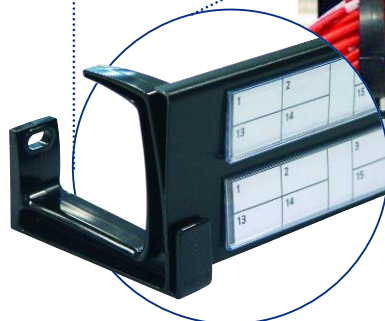
PATCH CORD MANAGEMENT ARM ●

The patch cord management arm can be fitted on both sides of the patch panel (replacing the panel end cap) to further reduce the possibility of patch cords becoming tangled or unmanageable. One management arm will account for the patch cords from multiple patch panels, making it not only efficient, but also economical.



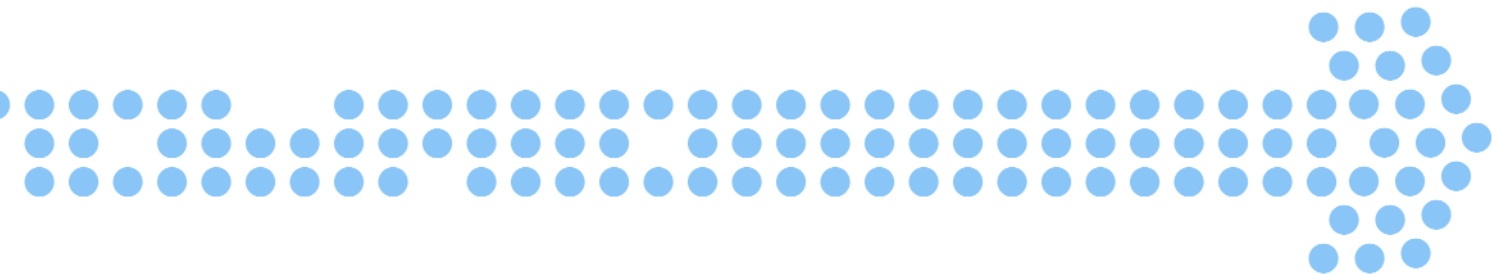
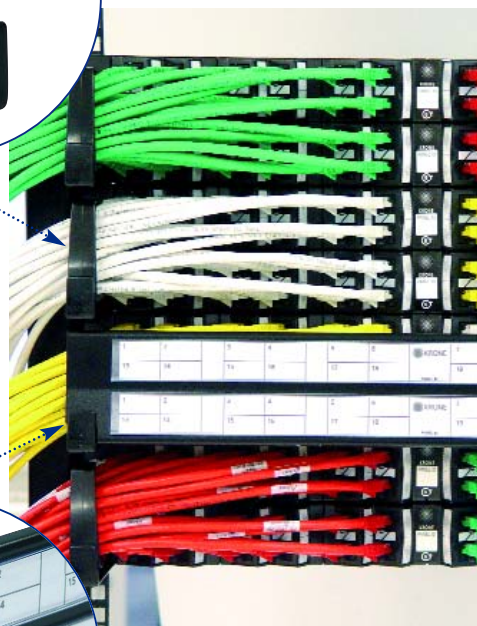
19" COVER LABEL ●

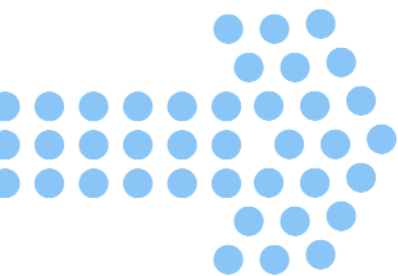
The angled panel includes comprehensive labelling facilities for each port as standard. However, this 19" cover has been developed to hide patch cords and provides further labelling for two panels, so that, when patched, panels and port locations can be easily identified. The cover clips securely onto the cable managers without the need for any tools and can be easily removed when panel maintenance or patching is required.



For ease of installation, performance and organised cable management - nothing compares to KRONE HIGHBAND.

Contact us now to find out how HIGHBAND can enhance your network performance.





TECHNICAL SPECIFICATIONS

Environment of use	Indoors, in closed rooms
Operating temperature range	-10°C to +60°C
Relative humidity	≤ 93°C Non-condensing
RJ45 socket, general specification	FCC 68.500, IEC 603-7
Voltage/current rating at ambient	≤150V AC / 2.5A max.
Dielectric strength	≥ 1.5kV AC
RJ interface resistance	≤ 20mΩ
Wire diameter range for solid and stranded copper conductor	0.50-0.65mm (24-22 AWG)*
Wire insulation diameter range (PE, PVC)	1.04-1.60mm (0.041"-0.063")
Transmission, performance and reliability	≥ TIA/EIA 568-B.2-1 Category 6 ≥ ISO/IEC 11801 Class E
Number of plug insertion cycles	≥ 750
Number of wire terminations	≥ 200
Flammability of plastic components	UL 94-V0
ACA compliant	

*If any conductor has been terminated, reversal to smaller conductors is no longer possible.

HIGHBAND® Category 6 Angled Patch Panel and Accessories



HIGHBAND Category 6 24 Port Angled Patch Panel with Masterminder



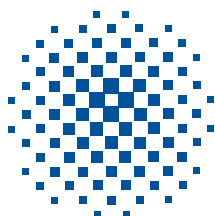
Patch Cord Management Arm



19" Cover Label for Patch Panel, 2RU

ORDERING INFORMATION

Description	Colour	Pack Qty	Part Number
HIGHBAND Category 6 24 Port Angled Patch Panel with Masterminder	Black	Box of 1	6450 1 181-24
Patch Cord Management Arm, 2RU	Black	Bag of 10	6450 1 188-00
Patch Cord Management Arm, 2RU	Dark Grey	Bag of 10	6450 1 188-01
19" Cover Label for Patch Panel, 2RU	Black	Kit includes 2 x Black Cable Managers	6450 1 189-00



KRONE

For further information please contact:
 KRONE (Australia) Holdings Pty Limited
 PO Box 335, Wyong NSW 2259
 2 Hereford Street, Berkeley Vale NSW 2261
 Ph: +61 2 4389 5000
 Fax: +61 2 4388 4499
 Email: kronehlp@krone.com.au
 Web: www.krone.com.au
 Job No 6200

KRONE (N.Z.) Technique Limited
 PO Box 38-177
 Wellington Mail Centre
 Wellington, New Zealand
 Tel: 0800 657 663
 Fax: 0800 355 100
 Email: sales@krone.co.nz