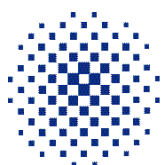
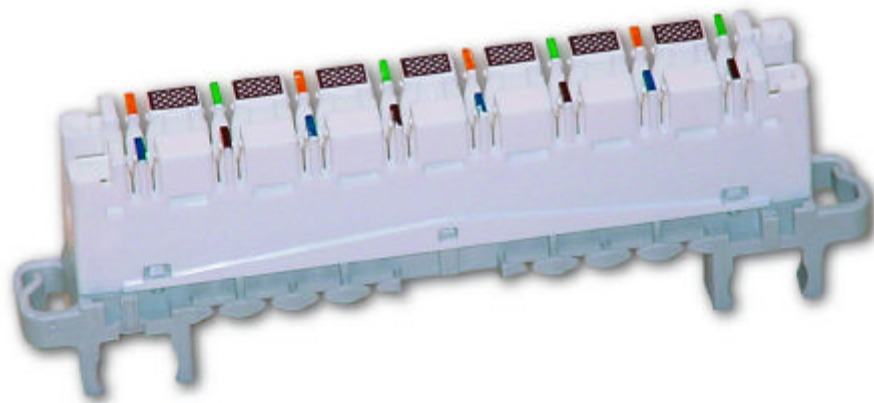


# KRONE Highband™ 16 & 20 Pair Switching Modules



KRONE

# KRONE Highband™

## 16 & 20 Pair Switching Modules

### Application:

Superior high speed data and voice cross connect modules. Available in 16 and 20 pair versions. These modules enable high speed LAN and WAN systems maximum headroom in transmission performance. They are ideal where density is of more importance than the disconnection feature of the Highband 8 and 10 pair modules.

Highband utilises the LSA Plus silver plated contact principle. This is proven technology which has become the 'industry standard' in over 60 countries. The gas tight contacts ensure a reliable and long lasting connection.

These modules can be either patched or double jumpered.

### Technical Specifications:

Environment for use: . . . Indoors or in dry enclosure rated IP54 or greater  
 Operating temperature range: . . . . . -10°C to +60°C  
 Maximum relative humidity: . . . . . 93% non-condensing  
 Transmission, performance and reliability:  
 ANSI/EIA/TIA 568A Cat. 5  
 ISO/IEC 11801 Cat. 5  
 Number of patching cycles: . . . . . ≥50  
 Number of wire reterminations: . . . . . ≥200  
 Wire diameter range for solid and stranded  
 copper conductors: . . . . . 0.40 - 0.65 mm\* (26-22 AWG)  
 Wire insulation  
 diameter range (PE, PVC): . . . . . 0.70 - 1.40 mm  
 Voltage rating: . . . . . 150 VAC  
 Insulation resistance: . . . . . ≥500,000 MΩ at 500 VDC  
 Safety: . . . . . UL 1863  
 Flammability rating of plastic housing: . . . . . UL 94 VO

\* A maximum of 2 equal diameter solid conductors only, of up to 0.5 conductor diameter can be terminated per slot. Only 1 conductor of stranded wires per slot can be terminated. If any conductors >0.5 diameter have been terminated, reversal to smaller conductors is no longer possible.

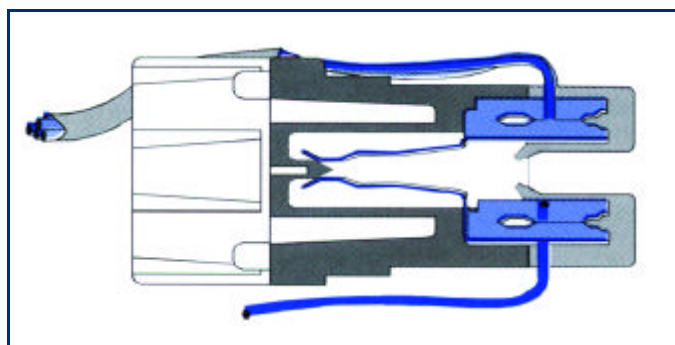
**Note:** When installing patch cords, ensure that the latch is located at the bottom of the module and that it clips into the holes provided.

### Part Numbers:

Highband 16 . . . . . 6468 2 080-00  
 Highband 20 . . . . . 6468 2 081-00

Also available:

Disconnection Modules  
 Highband 8 . . . . . 6468 2 060-00  
 Highband 10 . . . . . 6468 2 061-00



Highband Switching Contact

### Approvals:

ACA Compliant  
 UL Certified Category 5

### Performance:

NEXT @ 100Mhz (patched) - 53dB

#### KRONE (Australia) TECHNIQUE PTY LIMITED

ACN 002 047 181  
 PO Box 335  
 Wyong NSW 2259  
 2 Hereford Street  
 Berkeley Vale NSW 2261  
 Telephone: (043) 88 4422  
 Facsimile: (043) 88 4499  
 Toll Free Help Desk: 1800 801 298  
 Internet Address: kronehp@ozemail.com.au  
 CD5061 Issue 1

#### KRONE Asia Pacific Offices

	Telephone	Facsimile
Japan	+81 3 / 3578 1370	+81 3 / 3578 1360
Singapore	+65 / 538 8628	+65 / 538 8636
New Zealand	+64 4 / 576 9213	+64 4 / 576 9243
Hong Kong	+852 / 2865 4888	+852 / 2861 1444
Philippines	+63 2 / 848 9901	+63 2 / 848 9904
Indonesia	+62 21 / 520 0231	+62 21 / 522 1312
India	+91 80 / 225 1904	+91 80 / 225 1693
Thailand	+66 2 / 258 5801	+66 2 / 259 1367