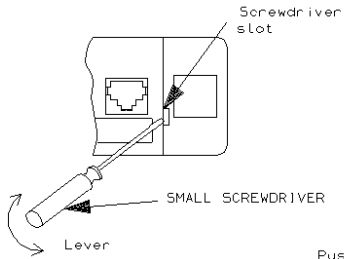




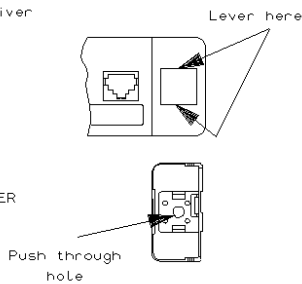
INSTALLATION INSTRUCTIONS FOR HIGHWAY PATCH PANEL, SHIELDED
PRODUCT No. 6450 1 047-00



TO REMOVE END CAP

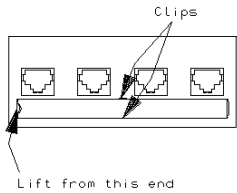


TO REMOVE END LENS



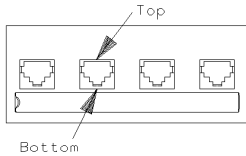
Lens may be removed from front using a knife blade (or similar) however, this may cause marking on the face of the end piece. The preferred method is to remove the end piece and pop out the lens by pushing through the hole provided on the rear of the end piece. The logo label may be reversed to provide an area for rack position.

TO REMOVE OUTLET LENS



Lift end with screwdriver or similar and lift until clips disengage. To replace lens place RH end in first and press the clips into place.

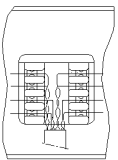
TO REMOVE OUTLET



First, push at top of outlet with screwdriver blade to release top latches. Next, place screwdriver blade at bottom of outlet and tap firmly to release lower latches. DO NOT pull on rear of outlet as this may damage the outlet.

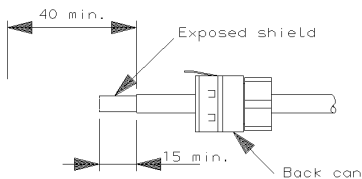
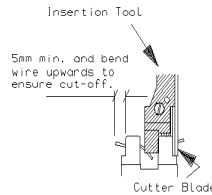
WIRING INSTRUCTIONS

When re-installing outlets, check that the commoning strip still makes contact with the outlet



Begin with the outlet closest to cable entry point, e.g. L/H or R/H entry. Prepare the cable as shown below. Fan the wires into the termination slot identified by the colour coding on the jack. It is essential that the twist rate of each pair be maintained as close as possible to the point of termination (max. 13mm untwist is allowed by current international standards).

Commence with the blue pair followed by orange, brown and green pairs. Terminate the wires using a KRONE termination tool.



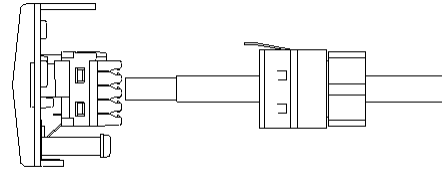
Place back can on cable, and strip approx. 40 mm of the sheath. Expose 15mm min. of the cable shield (ensure metal surface is on the outside).



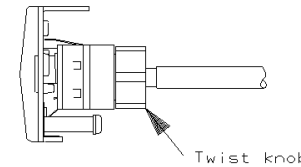
INSTALLATION INSTRUCTIONS FOR HIGHWAY PATCH PANEL SHIELDED
PRODUCT No. 6450 1 047-00



After termination, prior to fitting back can.

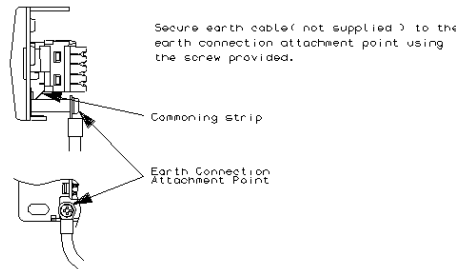


After fitting back can.



Clip backcan on to the outlet. Rotate the twist knob to lock on to the exposed cable shield

EARTH CONNECTION



PATCH CORD MINDER PANEL

When using jumper rings on the rear of the Patch Cord Minder Panel, terminate the wires on the outlets prior to fitting the jumper rings

