

KRONE LSA Profile® Disconnection Module

With the development of the LSA-PLUS quick connection system for all modern telecommunication networks, KRONE, as a pioneer in the field of insulation displacement connection technology, has set international technical standards and continues to be the technological leader where the secure, quick and reliable connection of wires is concerned.

LSA-PLUS means that no soldering, wire-stripping or the use of screws is necessary. A special feature of this system is the patented contacts which ensure the highest degree of contact reliability over decades, even under the most adverse environmental and climatic conditions.



Part Number: 6089 1 121-02

Description: LSA Profile Disconnection Module 2/10

Weight: 0.060kg

Pack: 1 set (10 pieces) including 1 set of number flags 1...0 and 10.....100

Housing Color: White

Disconnection module for 10 pairs with disconnection point for opening the line, testing possible in both directions or insertion of 3 or 5-point protection elements.
Cable side up, without color code

IDC Contact

LSA-PLUS® QUICK CONNECTION TECHNIQUE

LSA-PLUS® stands for a technically and economically superior quick connection system for all modern communication networks.

- L** No solder
- S** No use of screws
- A** No insulation removal

- P** Cost effective
- L** Easy to use
- U** Universal application
- S** Secure and fast



The design uses our unique Insulation Displacement Contact (IDC) technique which clamps the wires at a 45°C angle, thus dramatically reducing the risk of a poor termination and increasing the wiring productivity. Originally designed for telecommunications such as the widely accepted KRONE 10 pair termination module, this acclaimed technique has been used to provide the fundamental building block of our innovative range of products for the data market.

THE KRONE DIFFERENCE

Billions of LSA-PLUS® connections are installed throughout Telecommunication and Data networks worldwide. The LSA-PLUS® Quick Connection Technique is backed by this proven track record of reliability, global development and manufacturing resource all the aspects of quality assurance that are synonymous with the name KRONE.

ADVANTAGE

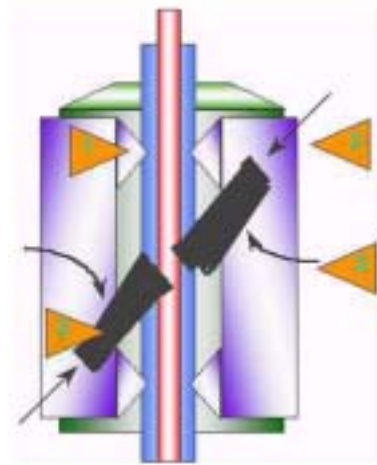
- Gas tight connection
- Two wires per contact
- One push wire insertion
- No Wire-stripping, screw and solder free
- Only one inexpensive tool required

The KRONE LSA-PLUS® Contact Technique

KRONE's 3 point method of termination gives durable quality connections.

KRONE's 3 point method of termination gives durable quality connections.

1. Insulation clamping ribs hold the wire firmly in position and isolate the contact area from vibration and other forms of mechanical stress.
2. Flexible nickel plated contact tags, arranged at 45° angles across axis of the wire, make a solid gas-tight connection.
3. Constant axial and torsional restoring forces, Created by the unique contact and plastic Housing, maintain a durable connection



Effects of KRONE contact on wire:

Positing contacts at 45° angle leaves more wire between contact points and provides a more reliable, stress-resistant connection.



Effects of other contact on wire:

Positing contacts at a 90° angle produces a point of weakness subject to possible breakage.

