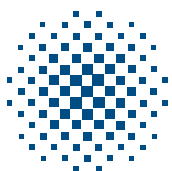


The ODS 500 is a modularly designed FO distributor system for the termination and patching of fibre-optic cables. The system is built up around the Distribution Cabinet System IPC (basic frame with corresponding accessories).

Depending upon the customer's requirements, the IPC can be fitted with

- sub-racks
- cable guide tray
- cable channel units



ODS 500

IPC system

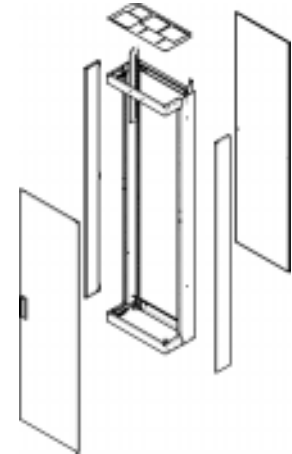
The IPC System is a modularly designed frame which allows for the setting up of distribution frames in a row.

The frames can be fitted as needed with side panels, a door and a back wall, which turns them into closed cabinets. In addition, the removable side panels allow better accessibility for cable lead-in and assembly. Their removal in a closed cabinet further allows patching to be carried out between neighboring distributors.

By using the appropriate mounting brackets sub-racks with 19" and ETSI dimensions can

also be installed in the distributor. It is ideally suited for customer-specific solutions, which can be set up quickly and with a minimum of work.

- Dimensions corresponding to the standardized ETSI dimensions:
 Height 2200 mm
 Width 600 mm
 Depth 300 mm
- Surface:
 Powder-coated
 RAL 7032 or RAL 7035



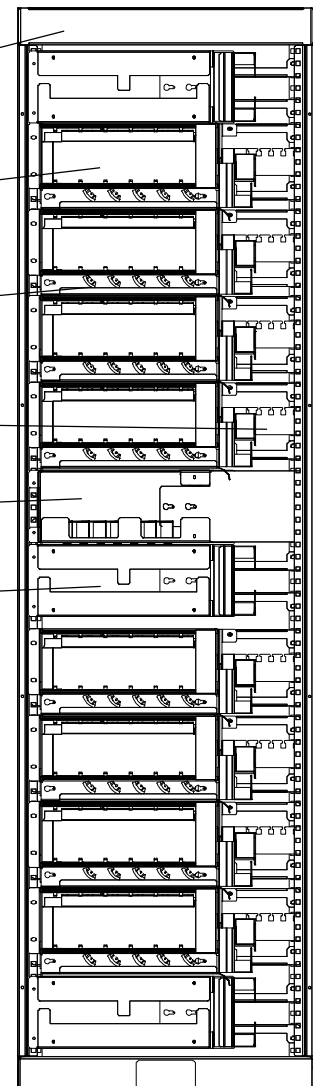
ODS 500

The distributors can be set up in a row. By removing inner side panels, patchcords can be led over cable channel units from one distributor to the neighboring one.

The incoming cables can be fed into the distributor both from below and from above, where they are then fixed for purposes of strain relief and the cable sheath removed. The loose tubes are then led to the individual sub-racks. The sub-racks are equipped at the back with a feed-in system for individual loose tubes. This allows the loose tubes to be led directly to the different module locations. The modules have an excess-length tray for accommodation of appr. 1.5m of the loose tube. These trays can be installed easily from the front of the IPC and can be moved comfortably to the splicing table. There is no need for a pivoted frame.

Overview of components

- IPC frame
- Sub-rack for Connector modules
- Cable guides tray
- Cable guides unit, vertical
- Storage unit
- Cable channel unit




Capacity

The total capacity depends on how many cabinets one sets up in a row. In the case of cabinets set up in a row in addition cable channel units are necessary for the through-patching of the patchcords. They are installed at the top, middle and bottom of the cabinets, with each unit requiring 3U in height.

Recommended Equipping

Eight sub-racks with 6 modules each. The remaining free space should be used for 1 additional storage unit and three cable channel units. This allows for a clear cable management also between distributors.

Maximum Capacity			
IPC frame	Sub-rack	Conn. Modules	Through-adapters
	1	1	1
	2	-	2
	-	-	-
	10	6	12
Σ	10	60	720

ODS 500

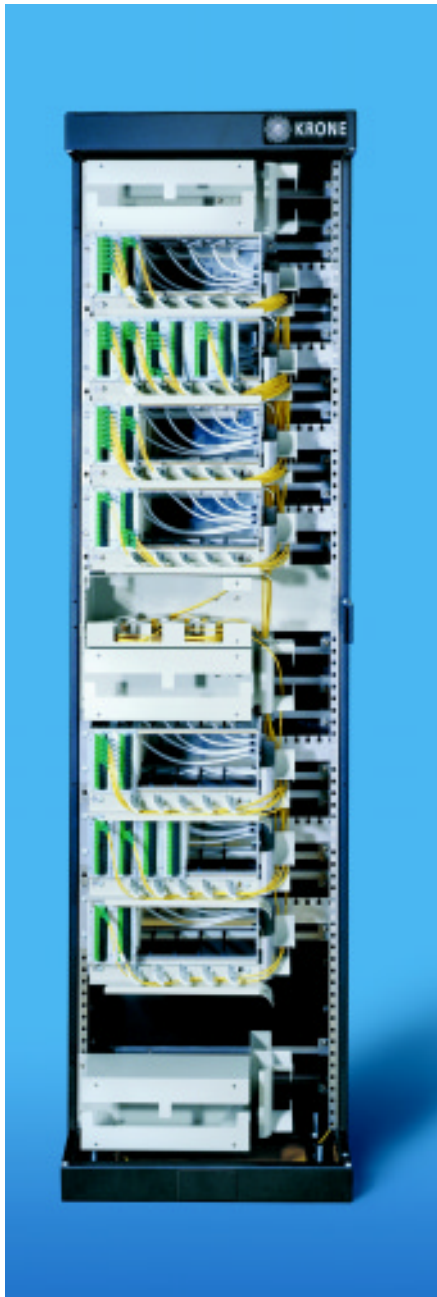
Recommended configuration

IPC

Frame	1 pc
Side panel, left	1 pc
Sidepanel, right	1 pc
Back wall	1 pc
Door	1 pc

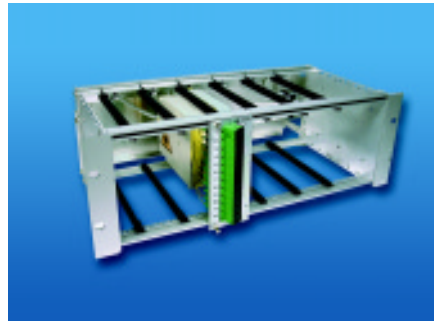
Modules for IPC

Sub-rack 68 HP	8 pcs
Cable guide unit, vertical	8 pcs
Cable guide tray	8 pcs
Cable channel unit	3 pcs
Storage unit	1 pc



Sub-rack (3 U)

The sub-racks are outfitted with a feed-in system for leading individual loose tubes directly to the different module locations. Accommodation for 6 connector modules, 10 HP.



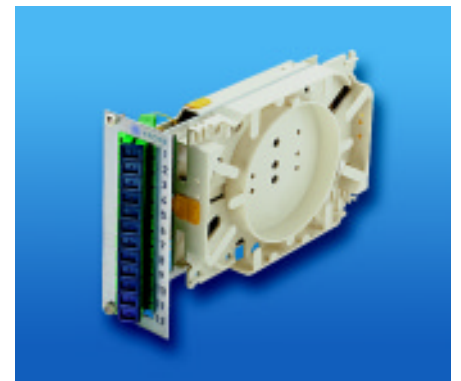
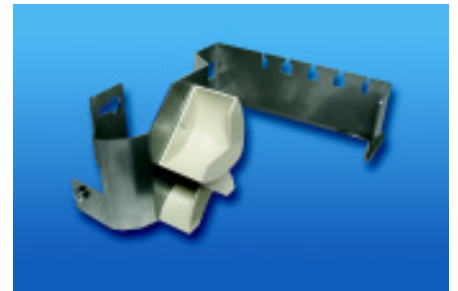
Connector modules

The connector modules are for the termination of loose tubes from outdoor or indoor cables. The pre-assembled modules are ready for installation and are outfitted with 12 through-adapters and pigtails; all common plug connectors are available.

They contain further a splice tray, a splice cassette and an excess-length cassette for accommodation of pigtail excess lengths as well as of appr. 1.5m of loose tube. This allows the module to be carried to the splice device.

Cable guide unit, vertical

The vertical cable guide units guide the patchcords between the sub-racks. They are part of the cable management system, which consists of the cable guide unit vertical, the cable guide tray, the cable channel unit and the storage unit.



FO connector module with access length cassette

Cable guide tray

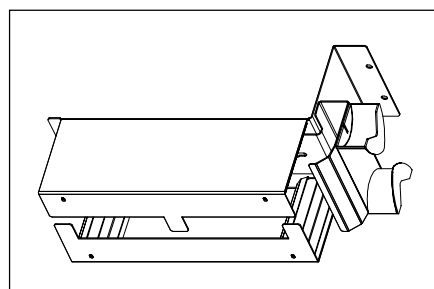
In the front area below every sub-rack space is to be left for cable guide trays. They are for horizontal guiding of patch cables into the vertical cable guide channels.

In addition, they are equipped with redirection elements for guiding the patchcords coming from the connector modules into the cable guide trays.



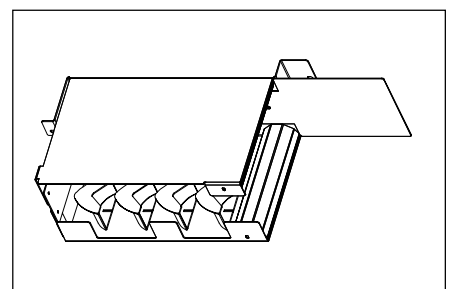
Cable channel unit

Used for guiding the patchcords between two or more distributors.



Storage unit

For accommodation of patchcord excess lengths.



Order information

VtS system		Order number	Qty
Frame		7039 1 101-10	1 pc
Side panel		7039 1 102-10	1 pc
Back wall		7039 1 106-10	1 pc
Door	with simple locking element with double locking element	7039 1 105-00 7039 1 104-10	1 pc 1 pc
Roof		7039 1 107-10	1 pc

Units for VtS system		Order number	Qty
Sub-rack	68 HP (6x10)	6833 2 725-06	1 pc
Cable guide unit	complete*	6833 2 720-06	1 pc
Cable channel unit		6833 2 728-06	1 pc
Storage unit		6833 2 727-06	1 pc

* include Cable guide unit, vertical and Cable guide tray

Sub-racks for 19" frames		Order number	Qty
Sub-rack	84 HP (8x10) 84 HP (4x4)10	6833 2 725-08 6833 2 725-18	1 pc 1 pc
Cable guide tray		6833 2 722-01	1 pc

Connector modules		Order number	Qty
10 HP	12x SC / APC	6833 2 600-00	1 pc
	12x SC / PC M5	6833 2 600-01	1 pc
	12x SC / PC	6833 2 600-02	1 pc
	12x FC / PC	6833 2 600-03	1 pc
	12x E2000 / APC	6833 2 600-04	1 pc
	6x LC-Duplex / APC 6x LC-Duplex / UPC	6833 2 600-06 6833 2 600-07	1 pc 1 pc

The modular design is based on the purchase of individual components. The functionality of the system is continually being expanded.



KRONE GmbH
 Beeskowdamm 3-11
 D-14167 Berlin
 Telefon +49 30 8453-1422
 Telefax +49 30 8453-1412
<http://www.krone.com>
vertrieb@krone.com