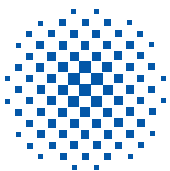
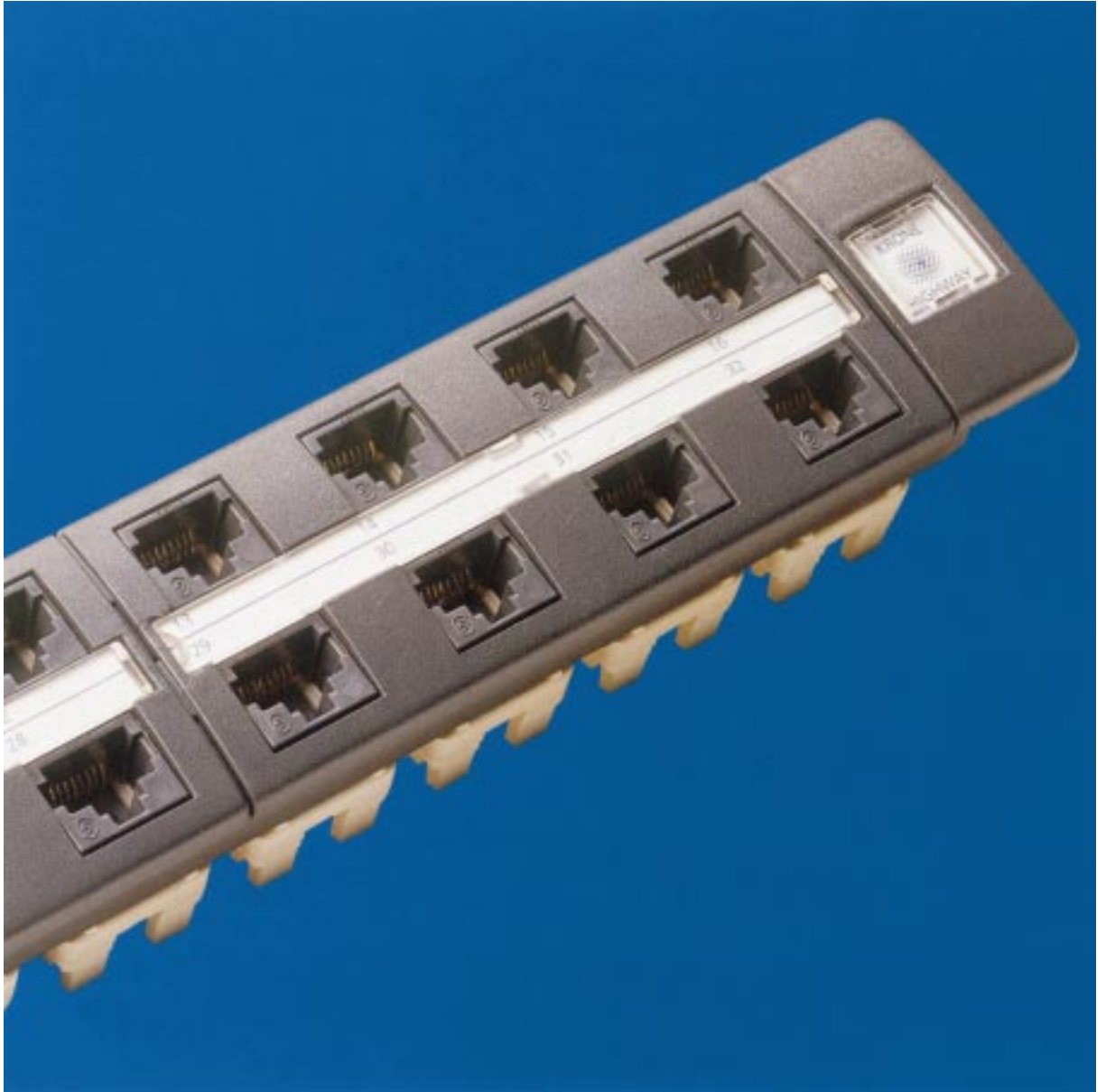


KRONE HIGHWAY™

PMK Series Patch Panels & Cable Management



KRONE

PremisNET

KRONE HIGHWAY™

PMK Series Patch Panels

The HIGHWAY Range of Patch Panels & Workstation Outlets has been engineered to provide enhanced performance. Exceeding Category 5E (Class D+) performance specifications, HIGHWAY Panels, Surface Mount and Flushmount Outlets provide performance headroom from one end of your system to the other.

The HIGHWAY range is fully capable of handling the demanding needs of today's resource hungry applications and those of emerging technologies

The HIGHWAY range of Patch Panels and Workstation Outlets use KRONE's patented LSA-PLUS contacts, thereby increasing reliability and durability. Featuring an extensive array of products, HIGHWAY provides the flexibility to completely customize any Structured Cabling System to best suit your network needs.

APPLICATION

Superior high speed data and voice transmission outlets. These 8 way RJ patch assemblies are suitable for direct termination of 100Ω twisted pair plastic insulated copper wires to KRONE LSA-PLUS insulation displacement contacts of the patch panel or jack. The sleek modern design of the new KRONE patch panels will complement any 19" equipment rack, making it a feature of your cabling system. Available in 16, 24 and 32 port designs, all in one rack unit.

TECHNICAL SPECIFICATIONS

Environment for use	Indoors, in dry closed rooms
Operating temperature range	-40°C to +70°C
Maximum relative humidity	≤93% non-condensing
Transmission, performance and reliability	≥ANSI/EIA/TIA 568A Cat. 5 E ≥ISO/IEC 11801 Cat. 5 ≥EN 50173 Cat. 5 Power NEXT ≥40.5 @ 100MHz
Number of plug insertion cycles	≥1250
RJ interface resistance	≤20mΩ
Wire diameter range for solid and stranded copper conductors	0.40 - 0.65 mm* (26-22AWG)
Wire insulation diameter range (PE, PVC)	0.70 - 1.40mm
Contact resistance	≤1mΩ typical
Number of wire reterminations	≥200
Voltage rating	≤150VAC
Current rating	≤2 A
Insulation resistance	≥100MΩ at 500 VDC
Safety	UL 1863
Flammability rating of plastic housing	UL 94 VO

* A maximum of 2 equal diameter solid conductors only, of up to 0.5 conductor diameter can be terminated per slot. Only 1 conductor of stranded wires per slot can be terminated. If any conductors >0.5 diameter have been terminated, reversal to smaller conductors is no longer possible.

KRONE recommends that 8 way RJ45 only be used in conjunction with these outlets.

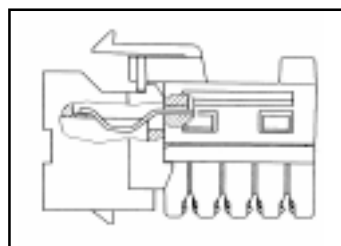
Approvals:

ACA Complaint

UL Certified Category 5E

FCC Compliant

ISO 11801



Unique "leadframe" one piece contact design with gold and silver plating. No PCBs or intermediate connections to reduce performance.

INSTALLATION PRACTICES

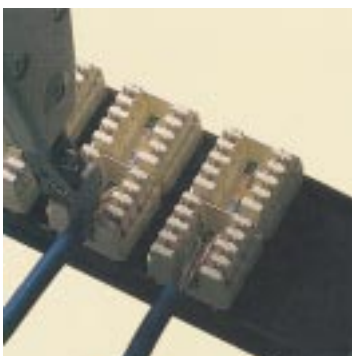
- 1 Mount the patch panel in the 19" Rack using the fasteners provided. Clip the end pieces over the installed fasteners. It is recommended that a patch cord minder be used for every 24 and 32 port patch panel and for every two 16 port patch panels.

Removal of End Cap



Place a small screwdriver in the slot provided and lever gently, as shown below.

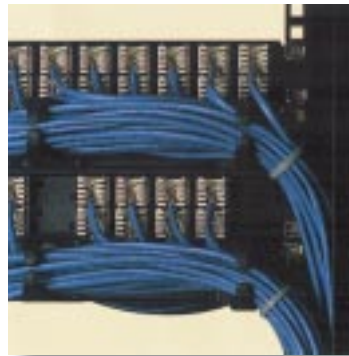
- 2 Prepare the cable to be terminated by stripping approximately 40mm of the sheath. Fan the wires into the termination slot identified by the colour coding on the jack. It is essential that the twist



rates of each pair be maintained as close as possible to the point of termination (maximum 13mm untwist is allowed by current international standards).

- 3 Terminate the wires using a KRONE termination tool. Ensure the cutting mechanism of the tool is located to the outside of the outlet. The Tool must be at a 90° angle to the termination point to ensure correct termination of the cable.

- 4 Clip the additional jumper ring to the rear of the patch cord minder and feed the terminated cables through them. Cables should then be cable tied



in their vertical position along the edge of the 19" rack.

LABELLING

End cap and outlet numbering lenses may be removed for individual labeling of patch panels. This allows customization of your network. Simply turn the existing label over and mark with a felt tip pen or replace completely.

Removal of End Cap Lens



Place a small screwdriver in the slot provided and lever gently, as shown below.

Removal of Outlet Numbering Lens



Place a small screwdriver in the slot provided and lever gently, as shown below

PATCH CORD MANAGEMENT

As mentioned in point 1 of the INSTALLATION PRACTICES it is recommended that you mount a patch cord minder between every 24 and 32 port patch panel and between every second 16 port patch panel. This will assist in installing and removing patch cords and also fault finding. The end result will be a very tidy installation that is easy to manage.

Clip the patch cords into the desired outlet and then feed through the rings on the patch cord minder/1U 19" patch bar. The patch cord should be fed through the closest ring and then run vertically along the inside edge of the 19" rack.

PART NUMBERS:

PMK 16 Port Patch Panel	6450 1 046-00
PMK 24 Port Patch Panel	6450 1 048-00
PMK 32 Port Patch Panel	6450 1 049-00
16 Port Shielded Patch Panel	6450 1 047-00
Patch Cord Minder	6450 1 050-00
1U 19" Patch Bar	6450 3 149-01



<http://www.krone.com.hk>

KRONE Hong Kong

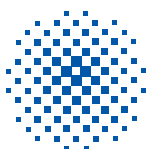
KRONE Communications Ltd.
13 Floor Gitic Centre
28 Queen's Road East,
Wanchai, Hong Kong
Tel: +852 2865 4888
Fax: +852 2861 1444
E-mail: marketing@krone.com.hk

KRONE Taiwan

KRONE Communications Ltd
Taiwan Liaison Office
Room 602, 23 Floor
105 Tun Hwa S. Road
Sec. 2, Taipei, Taiwan R.O.C.
Tel: +886 2 2784 1680
Fax: +886 2 2702 5050

KRONE Korea

KRONE Communications Ltd
Korea Liaison office
18 Floor, Kyung Am Building
157-27 Samsung Dong
Kangnam-Ku, Seoul, Korea
Tel: +82 2 565 4844
Fax: +82 2 555 5779



KRONE

Copyright 2000 KRONE HK
All rights reserved
HK/PMK/10/2000