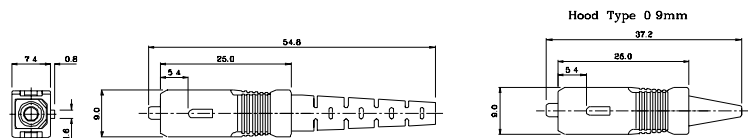


## FIBER OPTIC SOLUTIONS

## SC Connector

## Features:

- Low insertion loss
- Low back reflection loss
- Easy to handle
- Environmentally stable



Description : KRONE's SC fiber optic connector features a rugged zirconia ferrule for precision fiber alignment. The multimode version comes with a phosphor bronze ferrule. The connector has a push-pull mechanism for easier connections. The cable is crimped to the outer hardware and therefore prevents momentary disconnection when axial load is placed on the cable.

Use in cable-to-cable, pigtail-to-cable and cable-to-equipment connections.

- Application: - Telecommunications
- Local Area Network
  - Fiber to the home
  - Testing Instruments
  - CATV

**Technical Specification:**

Description		Singlemode	Multimode
Insertion Loss (dB)	Max.	0.5	0.5
	Typ.	0.2	0.2
Service Life (Cycles)		1000	1000
Operating Temperature°C		-40 ~ +75	
Storage Temperature°C		-55 ~ +85	

The performance of the adapter had been carefully designed to meet the toughest standards of EIA-455, GR-NWT -000326 in the test of :

- |                            |                        |
|----------------------------|------------------------|
| 1. Optical Characteristics | 5. Salt Spray Erosion  |
| 2. Vibration Test          | 6. Thermal Aging       |
| 3. Thermal Cycling & Aging | 7. Humidity Resistance |
| 4. Impact Resistance       | 8. Others              |

Part Number	Description
6643 1 012-00	Multimode SC Simplex Connector
6643 1 013-00	Single Mode SC Simplex Connector

**KRONE Australia**

Tel:+61 2 4388 4422  
 Fax:+61 2 4388 4499  
 E-mail: kronehlp@krone.com.au

**KRONE India**

Tel:+91 80 225 1904  
 Fax:+91 80 225 1693  
 E-mail: sales.India@krone.com

**KRONE Vietnam**

Tel:+84 4 934 3968- Ext:145, 146  
 Fax:+84 4 934 3956  
 E-mail: da.ngo@hn.vnn.vn

**KRONE China**

Tel:+86 21 5442 3680  
 Fax:+86 21 5442 2711  
 E-mail: webmaster@krone.com.cn

**KRONE Indonesia**

Tel:+62 21 520 0231  
 Fax:+62 21 522 1312  
 E-mail: krone@indosat.net.id

**KRONE Philippines**

Tel:+632 848 9901  
 Fax:+632 848 9904  
 E-mail: krone@compass.com.ph

**KRONE Hong Kong**

Tel:+852 2865 4888  
 Fax:+852 2861 1444  
 E-mail: marketing@krone.com.hk

**KRONE Taiwan**

Tel:+886 2 2784 1680  
 Fax:+886 2 2702 5050  
 E-mail: stewart.yao@krone.com.hk

**KRONE Singapore & Malaysia**

Tel:+65 538 8628  
 Fax:+65 538 8636  
 E-mail: kfe.mktg@krone.com

**KRONE Japan**

Tel:+81 3 3549 0311  
 Fax:+81 3 5565 2858  
 E-mail: kroneah@alles.or.jp

**KRONE New Zealand**

Tel:+64 4 576 9213  
 Fax:+64 4 576 9243  
 E-mail: sales@krone.co.nz

**KRONE Korea**

Tel:+82 2 565 4844  
 Fax:+82 2 555 5779  
 E-mail: by.lim@krone.com.hk

[www.kroneasia.com](http://www.kroneasia.com)



**KRONE**

**KRONE Thailand**

Tel:+662 637 8301  
 Fax:+662 637 8306  
 E-mail: praktik.homnan@krone.com